

1 2 3 4 5 6 7 8

A B C D E F

13	2163-002K	MAIN FRAME	-	1
12	2163-111	LEVER ARM	-	2
11	2163-110	LATCH HANDLE	-	2
10	2163-109	LINK ROD	-	2
9	2118-205	BOTTOM PIN	-	2
8	2118-204	TOP PIN	-	1
7	2115-044	BUSH CAT 2/3 BOTTOM LINK	-	2
6	2115-043	BUSH CAT 2/3 TOP LINK	-	1
5	1410-11F	PLAIN WASHER 9/16"Ø	-	2
4	1100-110	SPRING	-	2
3	1051-032	ROLL PIN 3/16" x 1 1/4"	-	6
2	1050-202	LYNCH PIN	-	3
1	0103-107	ROUND MS BLK 12mm DIA x 50	-	2

CHK: - REF No. - TITLE / DESCRIPTION, REFERENCE - MATERIAL QTY
 DWN: - DATE: 9/20/05
 SPC: - SUPERSEDES -

THIS DRAWING IS THE PROPERTY OF
 MOUNT TYSON QLD AUSTRALIA
 E-mail: Yin@mount.com.au

TITLE: QUICK HITCH
 CAT II
 HEAVY DUTY

PR/No: 2163-002
 SIZE: A 4L

APPROVED: - SCALE: - INCH STANDARD - TYPE: - REV: -

UNLESS SPECIFIED MATERIAL - STEEL TO:
 AS3678/250 - CMS) PLATE/BAR/EYE
 AS1163/350/430 - RHS/SHS
 AS1074 - (NB) NOMINAL BORE PIPE
 AS1442/EN - 14A (HB) HOLLOW BAR

TOLEANCES UNLESS SPECIFIED FABRICATION:
 MACHINING DIM: 0.05
 DIM: +/- 0.05
 ANGLAR +/- 0.05°
 HOLE CRS +/- 0.5
 FINISH 6.4µm

REV.	ZONE	DESCRIPTION OF CHANGE	BY	DATE
-	-	MAX. -	MAX. -	-
-	-	MIN. -	MIN. -	-



1 2 3 4 5 6 7 8

A B C D E F



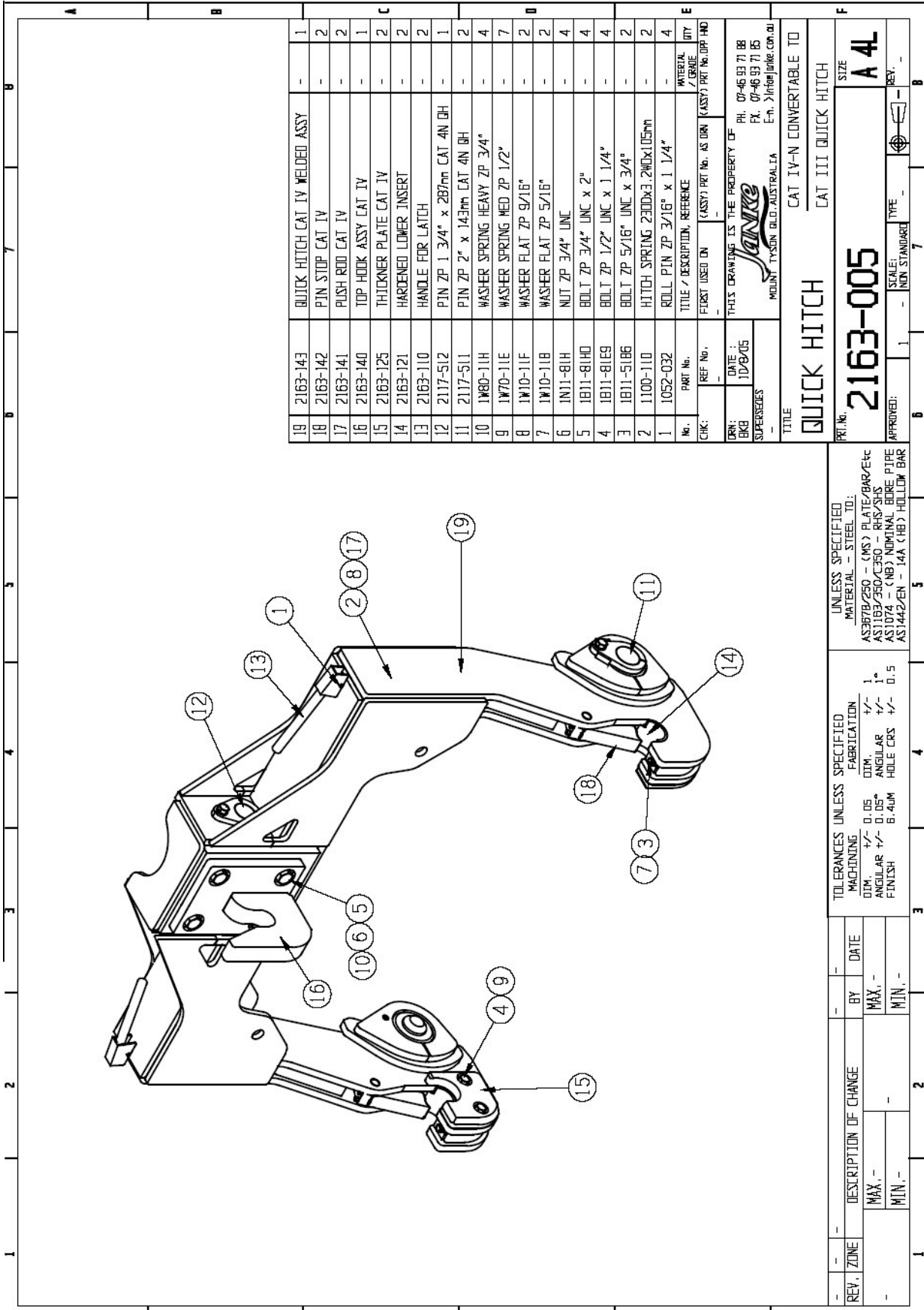
2

Price List for Quick Hitch Cat II **2163-002**

Individual Components:

No.	Part No.	Description	Qty.
1	0103-107	ROUND MS BLK 12MM DIA X 6M	2
2	1050-202	LYNCH PIN 6 X 32MM,(B2)	3
3	1051-032	ROLL PIN, Z.P. 3/16" X 1 1/4"	6
4	1100-110	SPRING, QUICK HITCH 23OD X 3.2WD X	2
5	1W10-11F	PLAIN WASHER 9/16"	2
6	2115-043	BUSH CAT2-3 TOP LINK 1 1/4OD X 1ID	1
7	2115-044	BUSH, CAT2-CAT3 LOWER LINK	2
8	2118-204	HITCH PIN UPPER ARM CAT 2	1
9	2118-205	HITCH PIN LOWER ARM CAT 2	2
10	2163-109	LINK ROD FOR LATCH CAT 3	2
11	2163-110	HANDLE FOR LATCH CAT 2 & 3	2
12	2163-111	LEVER ARM FOR LATCH CAT 2 & 3	2
13	2163-002K	MAIN FRAME	1

² Janke (Australia) reserves the right to alter the pricing of any of its products without notice.



REV.	ZONE	DESCRIPTION OF CHANGE	BY	DATE
-	-	MAX. -	-	-
-	-	MIN. -	-	-

REV.	ZONE	DESCRIPTION OF CHANGE	BY	DATE
19		QUICK HITCH CAT IV WELDED ASSY		
18		PIN STOP CAT IV		
17		PUSH ROD CAT IV		
16		TOP HOOK ASSY CAT IV		
15		THICKNER PLATE CAT IV		
14		HARDENED LOWER INSERT		
13		HANDLE FOR LATCH		
12		PIN ZP 1 3/4" x 287mm CAT 4N OH		
11		PIN ZP 2" x 143mm CAT 4N OH		
10		WASHER SPRING HEAVY ZP 3/4"		
9		WASHER SPRING MED ZP 1/2"		
8		WASHER FLAT ZP 9/16"		
7		WASHER FLAT ZP 5/16"		
6		NUT ZP 3/4" UNC		
5		BOLT ZP 3/4" UNC x 2"		
4		BOLT ZP 1/2" UNC x 1 1/4"		
3		BOLT ZP 5/16" UNC x 3/4"		
2		HITCH SPRING 2300x3.210x1.05mm		
1		ROLL PIN ZP 3/16" x 1 1/4"		

CHK.	REF No.	(ASSY) PART No. AS DRN	(ASSY) PART No. (APP HD)
-	-	-	-

DRN:	DATE:
BKB	10/8/05

SUPERSEDES

TITLE: QUICK HITCH
 CAT IV-N CONVERTABLE TO CAT III QUICK HITCH

SIZE: A 4L

APPROVED: 1 - NON STANDARD TYPE -

PH. 07-46 93 71 88
 FX. 07-46 93 71 85
 E-m. > info@janke.com.au

REV.	ZONE	DESCRIPTION OF CHANGE	BY	DATE
-	-	MAX. -	-	-
-	-	MIN. -	-	-

TOLERANCES UNLESS SPECIFIED	FABRICATION
MACHINING	+
DIM.	0.05
ANGULAR	+
FINISH	6.4UM

TOLERANCES UNLESS SPECIFIED	STEEL TO:
MATERIAL -	AS3778/250 - (MS) PLATE/BAR/Etc
	AS1163/250/C350 - RHS/SHS
	AS1074 - (NB) NOMINAL BORE PIPE
	AS1442/EN - 14A (HB) HOLLOW BAR



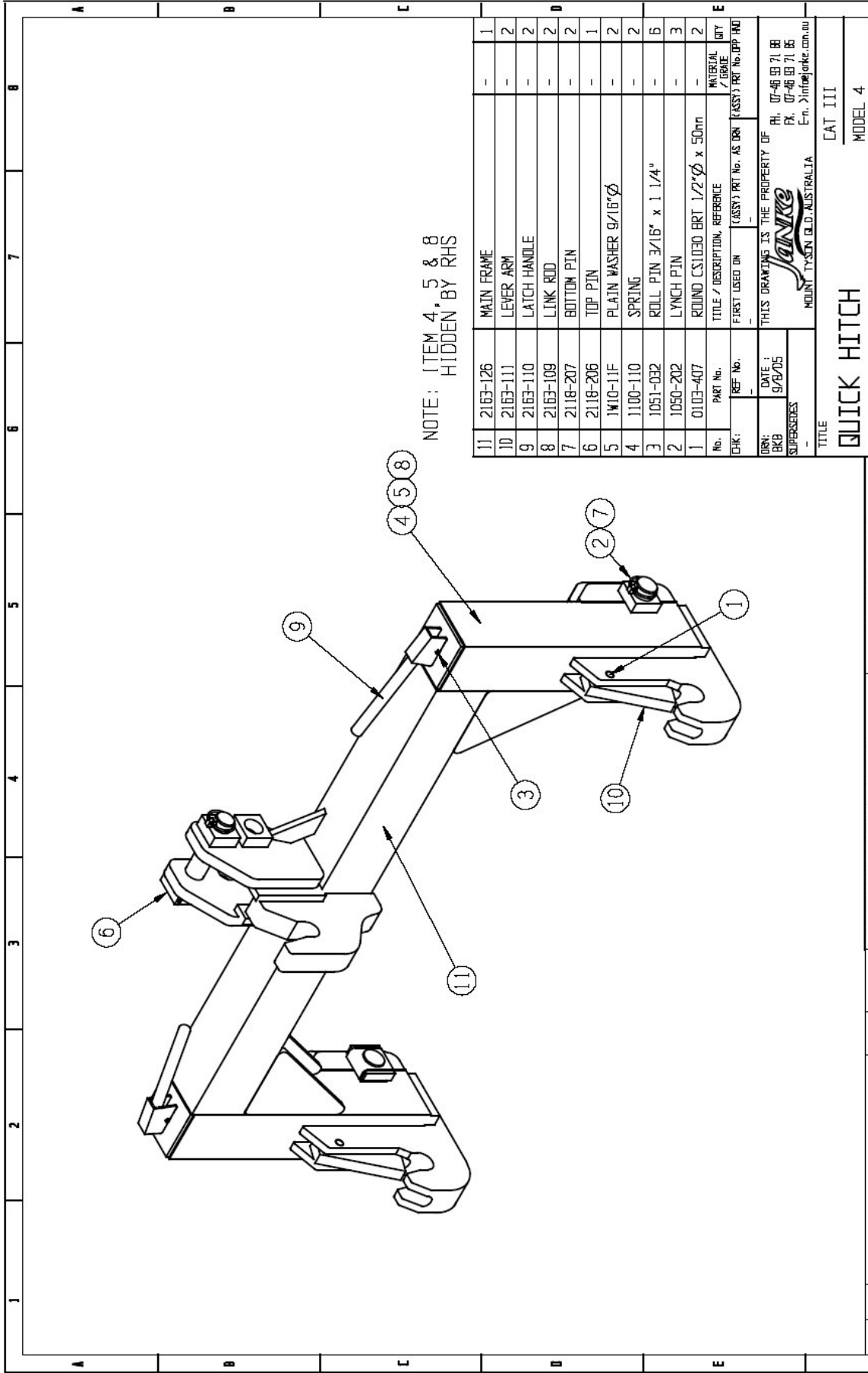
3

Price List for Quick Hitch Cat IV **2163-005**

Individual Components:

No.	Part No.	Description	Qty.
1	1051-032	ROLL PIN, Z.P. 3/16" X 1 1/4"	4
2	1100-110	SPRING, QUICK HITCH 23OD X 3.2WD	2
3	1B11-51B6	BOLT ZP 5/16 UNC X 3/4"	2
4	1B11-81E9	BOLT ZP 1/2 UNC X 1 1/4"	4
5	1B11-81HD	BOLT ZP 3/4 UNC X 2"	4
6	1N11-81H	NUT ZP 3/4"UNC	4
7	1W10-11B	WASHER FLAT ZP 5/16"	2
8	1W10-11F	WASHER FLAT ZP 9/16"	2
9	1W70-11E	WASHER SPRING MED ZP 1/2"	7
10	1W80-11H	WASHER SPRING HEAVY ZP 3/4"	4
11	2117-511	PIN HARDENED ZP 2" X 143mm CAT4N	2
12	2117-512	PIN HARDENED ZP 1 3/4" X287mm CA	1
13	2163-110	HANDLE FOR LATCH CAT 2 & 3	2
14	2163-121	HARDENED INSERT-LOWER HOOK CAT I	2
15	2163-125	THICKENER PLATE CAT IV	2
16	2163-140	TOP HOOK ASSY CAT IV QH	1
17	2163-141	PUSH ROD CAT IV QH	2
18	2163-142	PIN STOP CAT IV QH	2
19	2163-143	QH CAT IV WELD ASSY	1

³ Janke (Australia) reserves the right to alter the pricing of any of its products without notice.



NOTE: ITEM 4, 5 & 8
HIDDEN BY RHS

11	2163-126	MAIN FRAME	-	1
10	2163-111	LEVER ARM	-	2
9	2163-110	LATCH HANDLE	-	2
8	2163-109	LINK ROD	-	2
7	2118-207	BOTTOM PIN	-	2
6	2118-206	TOP PIN	-	1
5	1110-11F	PLAIN WASHER 9/16"Ø	-	2
4	1100-110	SPRING	-	2
3	1051-032	ROLL PIN 3/16" x 1.1/4"	-	6
2	1050-202	LYNCH PIN	-	3
1	0103-407	ROUND CS1030 BRT 1/2"Ø x 50mm	-	2

No.		DESCRIPTION, REFERENCE	MATERIAL	QTY
CHK:	REF. No.	CLASSY PART No. AS ORN	CLASSY PART No. ORN	CLASSY PART No. ORN
DRN:	DATE:	THIS DRAWING IS THE PROPERTY OF		
GRB	9/20/05	H. 07-48 93 71 88		
SUPERSERIES		P. 07-48 93 71 85		
		E-mail: >info@janke.com.au		
TITLE		MOUNT TYSSON QLD-AUSTRALIA		
TITLE		CAT III		
TITLE		MODEL 4		

REV. ZONE	DESCRIPTION OF CHANGE	BY	DATE
-	MAX. -	MAX.	-
-	MIN. -	MIN.	-

UNLESS SPECIFIED		MATERIAL - STEEL TEL:	
MATERIAL - STEEL TEL:		AS3678/250 - (MS) PLATE/BAR/Etc	
MATERIAL - STEEL TEL:		AS1163/350/C350 - RHS-SHS	
MATERIAL - STEEL TEL:		AS1074 - (NB) NOMINAL BORE PIPE	
MATERIAL - STEEL TEL:		AS1442/EN - 14A (HB) HOLLOW BAR	
TOLERANCES UNLESS SPECIFIED		FABRICATION	
MACHINING		DIM.	
DIM. +/- 0.05		ANGULAR +/- 1°	
ANGULAR +/- 0.05°		HOLE CRS +/- 0.5	
FINISH		HOLE CRS +/- 0.5	
FINISH		HOLE CRS +/- 0.5	
REV. ZONE		DESCRIPTION OF CHANGE	
MAX. -		MAX. -	
MIN. -		MIN. -	

REV. ZONE	DESCRIPTION OF CHANGE	BY	DATE
-	MAX. -	MAX.	-
-	MIN. -	MIN.	-

REV. ZONE	DESCRIPTION OF CHANGE	BY	DATE
-	MAX. -	MAX.	-
-	MIN. -	MIN.	-

REV. ZONE	DESCRIPTION OF CHANGE	BY	DATE
-	MAX. -	MAX.	-
-	MIN. -	MIN.	-



4

Price List for Quick Hitch Cat III **2163-006**

Individual Components:

No.	Part No.	Description	Qty.
1	0103-407	ROUND CS1030 BRT 1/2"(12.7)	2
2	1050-202	LYNCH PIN	3
3	1051-032	ROLL PIN, Z.P. 3/16" X 1 1/4"	6
4	1100-110	SPRING	2
5	1W10-11F	WASHER FLAT ZP 9/16"	2
6	2118-206	HITCH PIN	1
7	2118-207	HITCH PIN	2
8	2163-109	LINK ROD	2
9	2163-110	HANDLE FOR LATCH	2
10	2163-111	LEVER ARM	2
11	2163-126	QUICK HITCH FRAME	1

⁴ Janke (Australia) reserves the right to alter the pricing of any of its products without notice.