

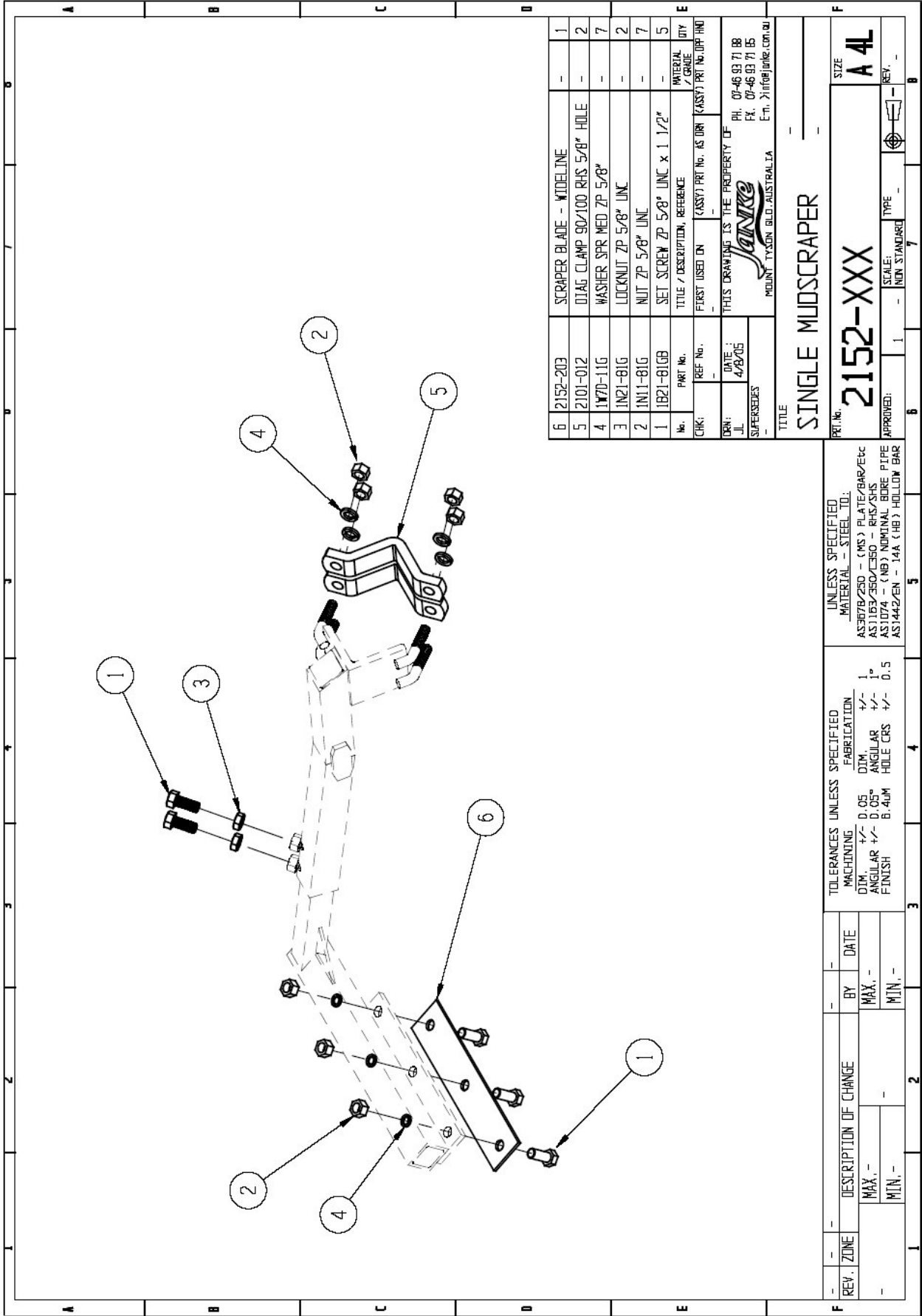


# **Section 6**

## Mud Scrapers

---

<sup>1</sup> Janke (Australia) reserves the right to alter the pricing of any of its products without notice.



6	2152-203	SCRAPER BLADE - MTDLINE	-	1
5	2101-012	DIAG CLAMP 90/100 RHS 5/8" HOLE	-	2
4	1W7D-11G	WASHER SPR MED ZP 5/8"	-	7
3	1N21-81G	LOCKNUT ZP 5/8" UNC	-	2
2	1N11-81G	NUT ZP 5/8" UNC	-	7
1	1B21-81GB	SET SCREW ZP 5/8" UNC x 1 1/2"	-	5
No.	PART No.	TITLE / DESCRIPTION, REFERENCE	MATERIAL / GRADE	QTY
CHK:	REF No.	FIRST USED ON (ASSY) PART No. AS DRN (ASSY) PART No. DRP (M)		
DRN:	DATE:	THIS DRAWING IS THE PROPERTY OF	PH. 07-46 93 71 88	
JL	4/8/05		FX. 07-46 93 71 85	
SUPERSEDES			ETI. > info@janke.com.au	
			MOUNT TYSON BLD. AUSTRALIA	

TITLE  
**SINGLE MUDSCRAPER**

PRJ No.	2152-XXX	SIZE	A 4L
APPROVED:	1	SCALE:	NON STANDARD
	6	TYPE	
	7	REV.	

UNLESS SPECIFIED  
MATERIAL - STEEL TO:  
AS3078/250 - (MS) PLATE/BAR/Etc  
AS1163/350/2350 - RHS/ZHS  
AS1074 - (NB) NOMINAL BORE PIPE  
AS1442/EN - 14A (HB) HOLLOW BAR

TOLERANCES UNLESS SPECIFIED	FABRICATION
MACHINING:	DIM.
+/- 0.05	+/- 1°
ANGULAR +/- 0.05°	ANGULAR +/- 0.5
FINISH 6.4µm	HOLE CRS +/-

REV.	ZONE	DESCRIPTION OF CHANGE	BY	DATE
		MAX. -		
		MIN. -		



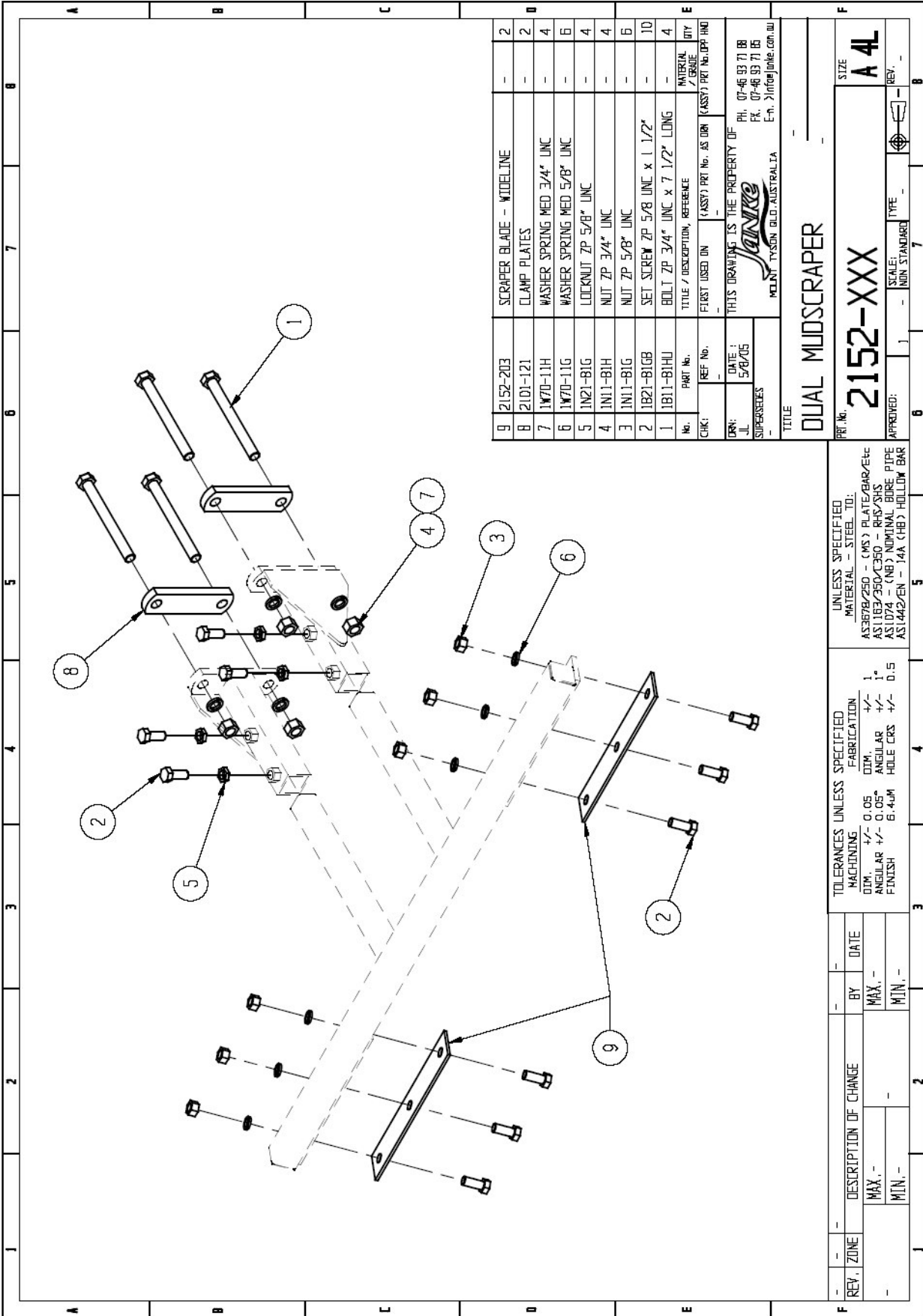
**Price List for single Mudscraper**  
**2152-XXX**

Individual Components:

<b>No.</b>	<b>Part No.</b>	<b>Description</b>	<b>Qty.</b>
1	1B21-81GB	SET SCREW ZP 5/8" UNC x 1 1/2"	5
2	1N11-81G	NUT ZP 5/8" UNC	7
3	1N21-81G	LOCKNUT ZP 5/8" UNC	2
4	1W70-11G	WASHER SPR MED ZP 5/8"	7
5	2101-012	DIAG CLAMP 90/100 RHS 5/8" HOLE	2
6	2152-203	SCRAPER BLADE - WIDELINE	1

---

<sup>2</sup> Janke (Australia) reserves the right to alter the pricing of any of its products without notice.



QTY	PART No.	TITLE / DESCRIPTION, REFERENCE	MATERIAL / GRADE
9	2152-203	SCRAPER BLADE - WIDELINE	-
8	2101-121	CLAMP PLATES	-
7	1W70-11H	WASHER SPRING MED 3/4" UNC	-
6	1W70-11G	WASHER SPRING MED 5/8" UNC	-
5	1N21-81G	LOCKNUT ZP 5/8" UNC	-
4	1N11-81H	NUT ZP 3/4" UNC	-
3	1N11-81G	NUT ZP 5/8" UNC	-
2	1B21-81GB	SET SCREW ZP 5/8 UNC x 1 1/2"	-
1	1B11-81HU	BOLT ZP 3/4" UNC x 7 1/2" LONG	-
No.		PART No.	MATERIAL / GRADE
CHK1		REF No.	(ASSY) PRI No. (AS DRN) (ASSY) PRI No. (PP INH)
DRN:		DATE:	PH. 07-46 93 71 88
SUPERSEDES		JL	FK. 07-46 93 71 85
			E-n. > info@janke.com.au

TITLE: **DUAL MIDSCRAPER**  
 PRI. No.: **2152-XXX**  
 SIZE: **A 4L**  
 APPROVED: \_\_\_\_\_  
 SCALE: \_\_\_\_\_  
 TYPE: \_\_\_\_\_  
 REV. \_\_\_\_\_

REV.	ZONE	DESCRIPTION OF CHANGE	BY	DATE
-	-	MAX. -	-	-
-	-	MIN. -	-	-

TOLERANCES UNLESS SPECIFIED		UNLESS SPECIFIED	
MACHINING	FABRICATION	MATERIAL - STEEL TO:	PIPE
±0.05	±0.1	AS 3678/250 - (MS)	AS 1634/350/350 - (RHS/SHS)
±0.05	±0.1	AS 1634/350/350 - (RHS/SHS)	AS 1074 - (NB)
±0.05	±0.1	AS 1074 - (NB)	NOMINAL BORE
±0.05	±0.1	AS 1442/EN - 14A (HB)	HOLLOW BAR



3

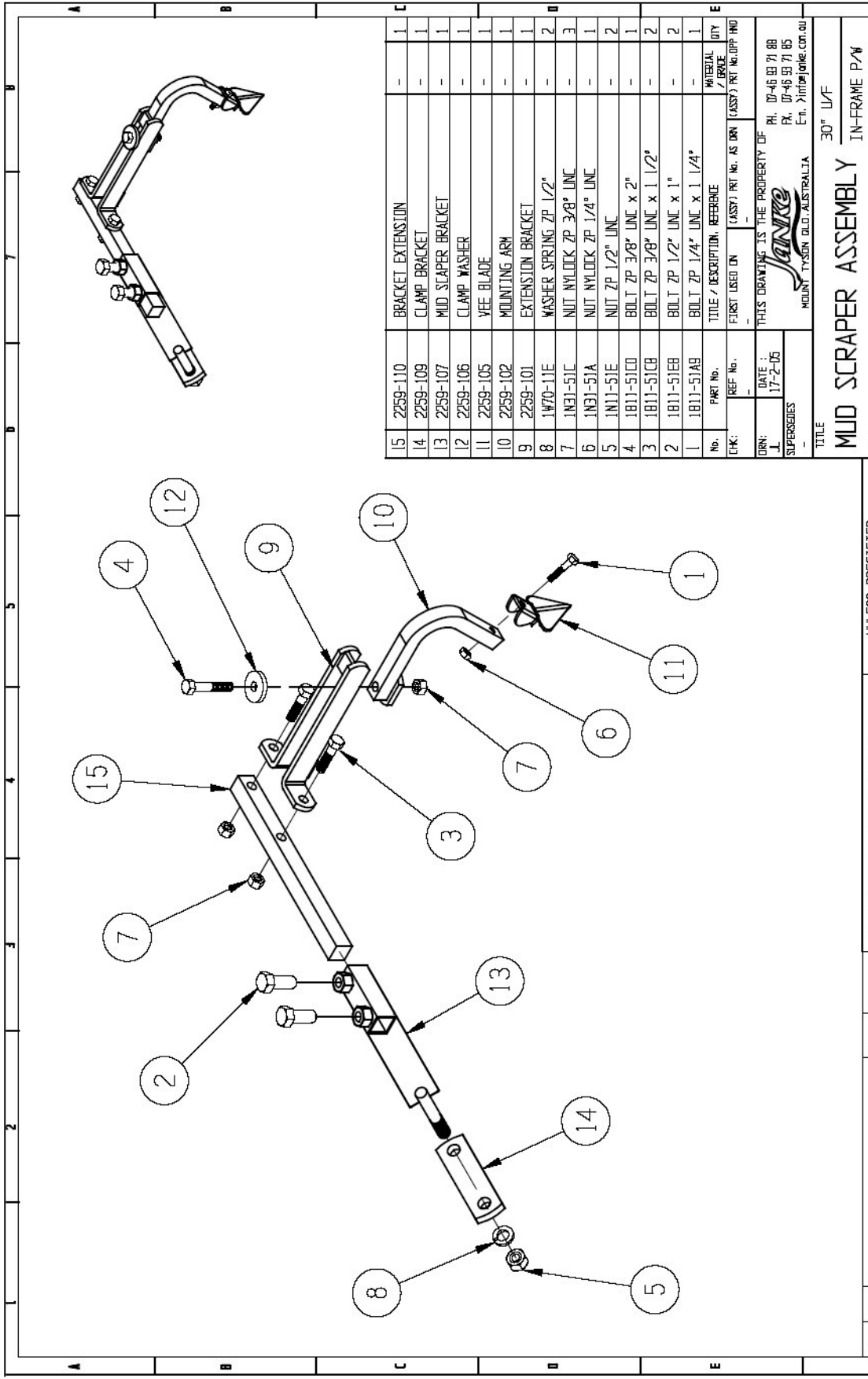
## **Price List for Dual Mudscraper** **2152-XXX**

### Individual Components:

<b>No.</b>	<b>Part No.</b>	<b>Description</b>	<b>Qty.</b>
1	1B11-81HU	BOLT 3/4" UNC x 7 1/2"	4
2	1B21-81GB	SET SCREW 5/8" x 1 1/2" UNC	10
3	1N11-81G	NUT ZP 5/8" UNC	6
4	1N11-81H	NUT ZP 3/4" UNC	4
5	1N21-81G	LOCKNUT ZP 5/8" UNC	4
6	1W70-11G	WASHER SPRING ME 5/8"	6
7	1W71-11H	WASHER SPRING MED 3/4"	4
8	2101-121	CLAMP PLATES	2
9	2152-203	SCRAPER BLADE - WIDELINE	2

---

<sup>3</sup> Janke (Australia) reserves the right to alter the pricing of any of its products without notice.



REF. NO.	DATE	BY	DESCRIPTION	QTY
15			BRACKET EXTENSION	1
14			CLAMP BRACKET	1
13			MUD SCRAPER BRACKET	1
12			CLAMP WASHER	1
11			VEE BLADE	1
10			MOUNTING ARM	1
9			EXTENSION BRACKET	1
8			WASHER SPRING ZP 1/2"	2
7			NUT NYLOCK ZP 3/8" UNC	3
6			NUT NYLOCK ZP 1/4" UNC	1
5			NUT ZP 1/2" UNC	2
4			BOLT ZP 3/8" UNC x 2"	1
3			BOLT ZP 3/8" UNC x 1 1/2"	2
2			BOLT ZP 1/2" UNC x 1"	2
1			BOLT ZP 1/4" UNC x 1 1/4"	1

TITLE: 30" W/F  
 IN-FRAME P/W  
**2259-004**  
 SCALE: 1" = 1'-0"  
 TYPE: NON-STANDARD  
 REV. 1

REF. NO.	DATE	BY	DESCRIPTION	QTY
15			BRACKET EXTENSION	1
14			CLAMP BRACKET	1
13			MUD SCRAPER BRACKET	1
12			CLAMP WASHER	1
11			VEE BLADE	1
10			MOUNTING ARM	1
9			EXTENSION BRACKET	1
8			WASHER SPRING ZP 1/2"	2
7			NUT NYLOCK ZP 3/8" UNC	3
6			NUT NYLOCK ZP 1/4" UNC	1
5			NUT ZP 1/2" UNC	2
4			BOLT ZP 3/8" UNC x 2"	1
3			BOLT ZP 3/8" UNC x 1 1/2"	2
2			BOLT ZP 1/2" UNC x 1"	2
1			BOLT ZP 1/4" UNC x 1 1/4"	1

THIS DRAWING IS THE PROPERTY OF  
**Jankre**  
 MOUNT TYSEN BLD. AUSTRALIA  
 C/O. 2110 PINE COT. AU.

UNLESS SPECIFIED  
 MATERIAL - STEEL TO:  
 AS3678/250 - (MS) PLATE/BAR/Etc  
 AS1163/350/350 - RIB/SHS  
 AS1074 - (NB) NOMINAL BORE PIPE  
 AS1442/PEN - 144 (HB) HOLLOW BAR

TOLERANCES UNLESS SPECIFIED  
 MACHINING: DIM: +/- 0.05  
 FINISH: ANGULAR +/- 0.05°  
 HOLE CRS +/- 0.5  
 FABRICATION: DIM: +/- 1.0  
 ANGULAR +/- 1.0°  
 HOLE CRS +/- 0.5



**Price List for Mud Scraper Assy.**  
**2259-004**

**Individual Components:**

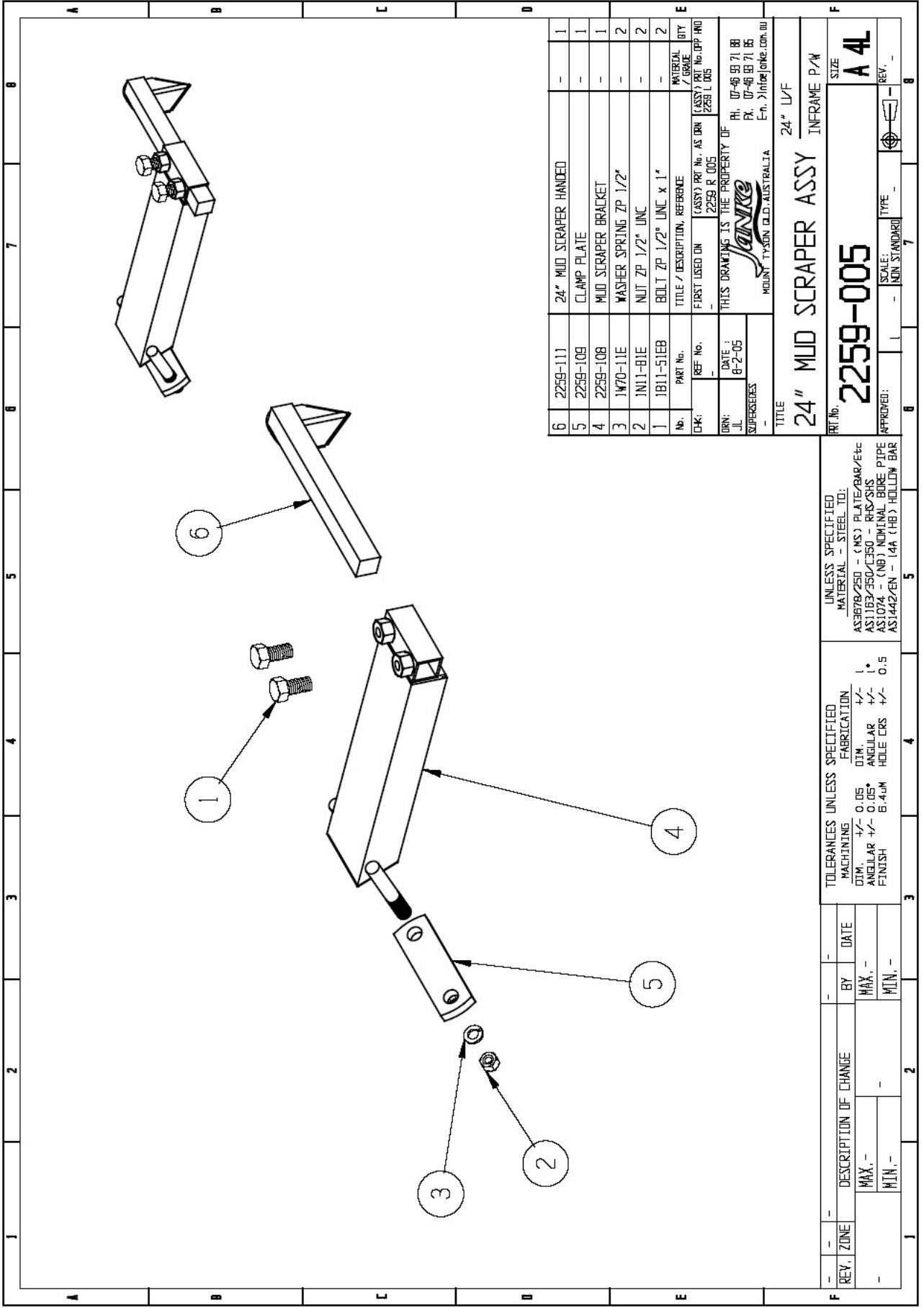
<b>No.</b>	<b>Part No.</b>	<b>Description</b>	<b>Qty.</b>
1	1B11-51A9	BOLT ZP 1/4 UNC X 1 1/4"	1
2	1B11-51E8	BOLT ZP 1/2 UNC X 1"	2
3	1B11-51CB	BOLT ZP 3/8 UNC X 1 1/2"	2
4	1B11-51CD	BOLT ZP 3/8 UNC X 2"	1
5	1N11-51E	NUT ZP 1/2" UNC	2
6	1N31-51A	NUT NYLOC ZP 1/4"UNC	1
7	1N31-51C	NUT NYLOC ZP 3/8"UNC	3
8	1W70-11E	WASHER SPRING ZP 1/2"	2
9	2259-101	EXTENSION BRACKET PW MUDSCRAPER	1
10	2259-102	MOUNTING ARM, PW MUDSCRAPER	1
11	2259-105	VEE BLADE REPLACEABLE TUNGSTEN TIPPED	1
12	2259-106	CLAMP WASHER 33OD X 10ID X 5mm	1
13	2259-107	BRACKET 30" U/F INFRAME	1
14	2259-109	CLAMP PL INFRAME	1
15	2259-110	BRACKET EXTENSION 30" U/F INFRAME      RED SQ BAR	1


---

<sup>4</sup> Janke (Australia) reserves the right to alter the pricing of any of its products without notice.







6	2259-111	24" MUD SCRAPER HANDLE	-	1
5	2259-109	CLAMP PLATE	-	1
4	2259-108	MUD SCRAPER BRACKET	-	1
3	1W70-11E	WASHER SPRING ZP 1/2"	-	2
2	1N11-81E	NUT ZP 1/2" UNC	-	2
1	1B11-51EB	BOLT ZP 1/2" UNC x 1"	-	2
No.	PART No.	TITLE / DESCRIPTION, REFERENCE		MATERIAL QUOTE QTY
CHK:	REF No.	CLASSY PROJ No. AS DRN	LASTY /	ASSTY /
		2259 R 005	2259 L 005	2259 L 005
DRN:	DATE :	THIS DRAWING IS THE PROPERTY OF		
JL	8-2-05	 HUNTINGTON (Q.L.D.) AUSTRALIA P.O. BOX 99 71 88 P.O. BOX 99 71 88 E-mail: <a href="mailto:janke@janke.com.au">janke@janke.com.au</a>		

TITLE		24" LWF
24" MUD SCRAPER ASSY INFRAME P/W		
PRT No.	A 4L	
2259-005	-	
APPROVED:	SCALE:	TYPE
-	-	-
	NON STANDARD	

REV. / ZONE	DESCRIPTION OF CHANGE	BY	DATE	TOLERANCES UNLESS SPECIFIED	FABRICATION	MATERIAL - STEEL TO:
				MACHINING: DIM: +/- 0.05 ANGULAR +/- 0.05° FINISH B-4.0M	DIM: +/- 1.0 ANGULAR +/- 1.0 HOLE CRS +/- 0.5	UNLESS SPECIFIED MATERIAL - STEEL TO: AS3678/250 - (MS) PLATE/BAR/etc AS1163/350/LE50 - RPS/SHS AS1074 - (NB) NOMINAL BORE PIPE AS1442/2EN - 14A (HB) HOLLOW BAR
	MAX. -					
	MIN. -					



**Price List for 24" Mud Scraper Assy.**  
**2259-005**

Individual Components:

<b>No.</b>	<b>Part No.</b>	<b>Description</b>	<b>Qty.</b>
1	1B11-51E8	BOLT ZP 1/2 UNC X 1"	2
2	1N11-81E	NUT ZP 1/2"UNC	2
3	1W70-11E	WASHER SPRING MED ZP 1/2"	2
4	2259-108	BRACKET 24" U/F INFRAME	1
5	2259-109	CLAMP PL INFRAME	1
6 <sup>5</sup>	2259-111	24" MUD SCRAPER HANDED	1

---

<sup>5</sup> Janke (Australia) reserves the right to alter the pricing of any of its products without notice.