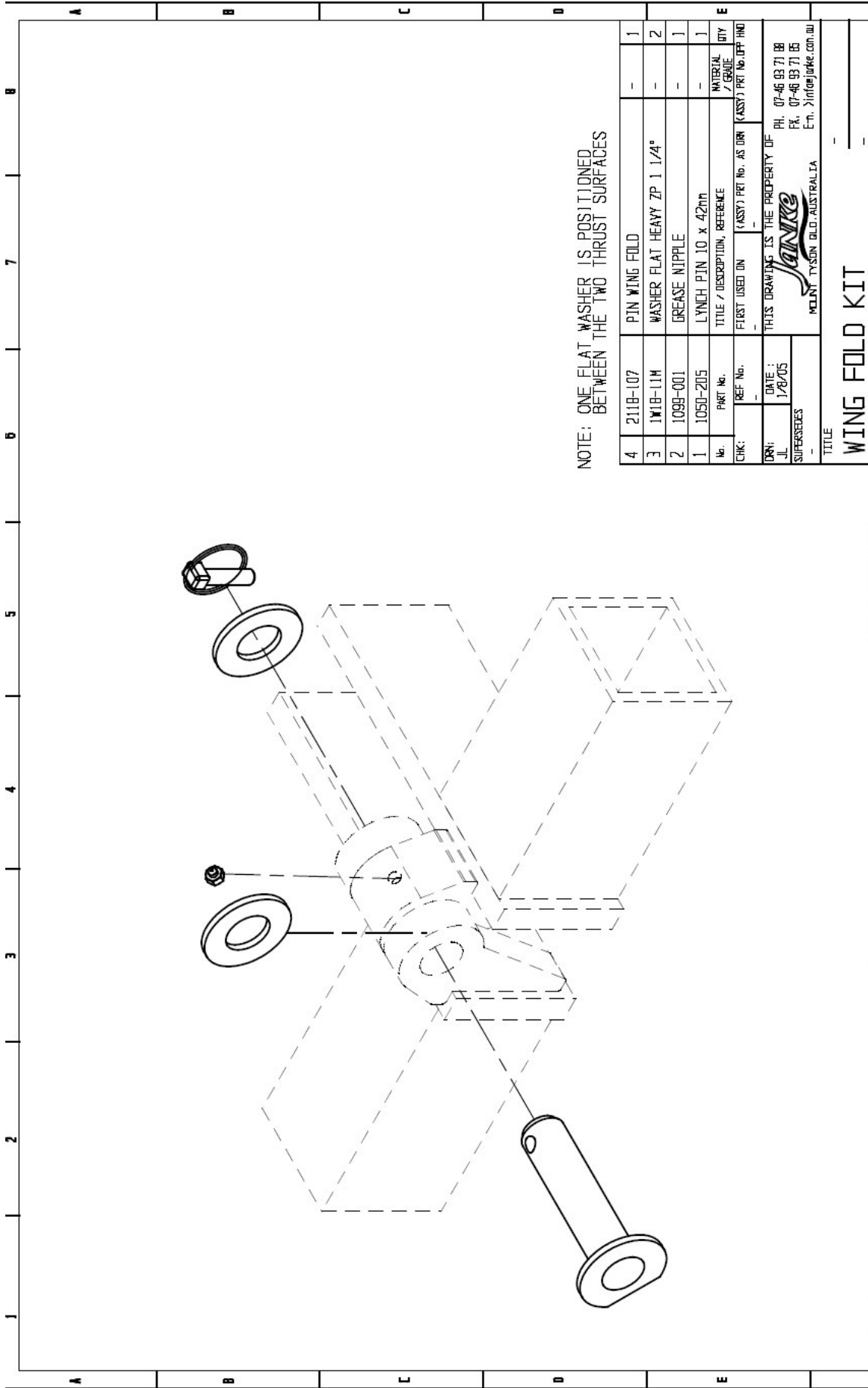





Section 5

Wing Fold Kit, Depth
Wheels & Stabiliser
Wheels

¹ Janke (Australia) reserves the right to alter the pricing of any of its products without notice.



NOTE: ONE FLAT WASHER IS POSITIONED BETWEEN THE TWO THRUST SURFACES

4	2118-107	PIN WING FOLD	-	1
3	1W18-11M	WASHER FLAT HEAVY ZP 1 1/4"	-	2
2	1099-001	GREASE NIPPLE	-	1
1	1050-205	LYNCH PIN 10 x 42mm	-	1
No.	PART No.	TITLE / DESCRIPTION, REFERENCE	MATERIAL / GRADE	QTY
CHK:	REF No.	FIRST USED ON	(ASSY) PART No. AS DIR	(ASSY) PART No. OFF INH
DRN:	DATE:	THIS DRAWING IS THE PROPERTY OF		
JL	1/8/05	 MELB TYSON BLD, AUSTRALIA PH. 07-46 93 71 88 FX. 07-46 93 71 85 E-MAIL: jank@jank.com.au		
SUPERSEDES				

TITLE
WING FOLD KIT

REV. ZONE		DESCRIPTION OF CHANGE		BY	DATE
MAX.		MIN.			
TOLERANCES UNLESS SPECIFIED MACHINING: DIM. +/- 0.05 ANGULAR +/- 0.05° FINISH 6.4UM FABRICATION: DIM. +/- 1° ANGULAR +/- 1° HOLE CRS +/- 0.5 UNLESS SPECIFIED: MATERIAL - STEEL: 10L AS3678/250 - (MS) PLATE/BAR/etc AS1163/350/C350 - RHS/SHS AS1074 - (NB) NOMINAL BORE PIPE AS1442/EN - 14A (HB) HOLLOW BAR					
PART No.		TITLE		SIZE	
2118-107-K		WING FOLD KIT		A 4L	
APPROVED:	SCALE:	TYPE:	REV.		
1	NON STANDARD		-		

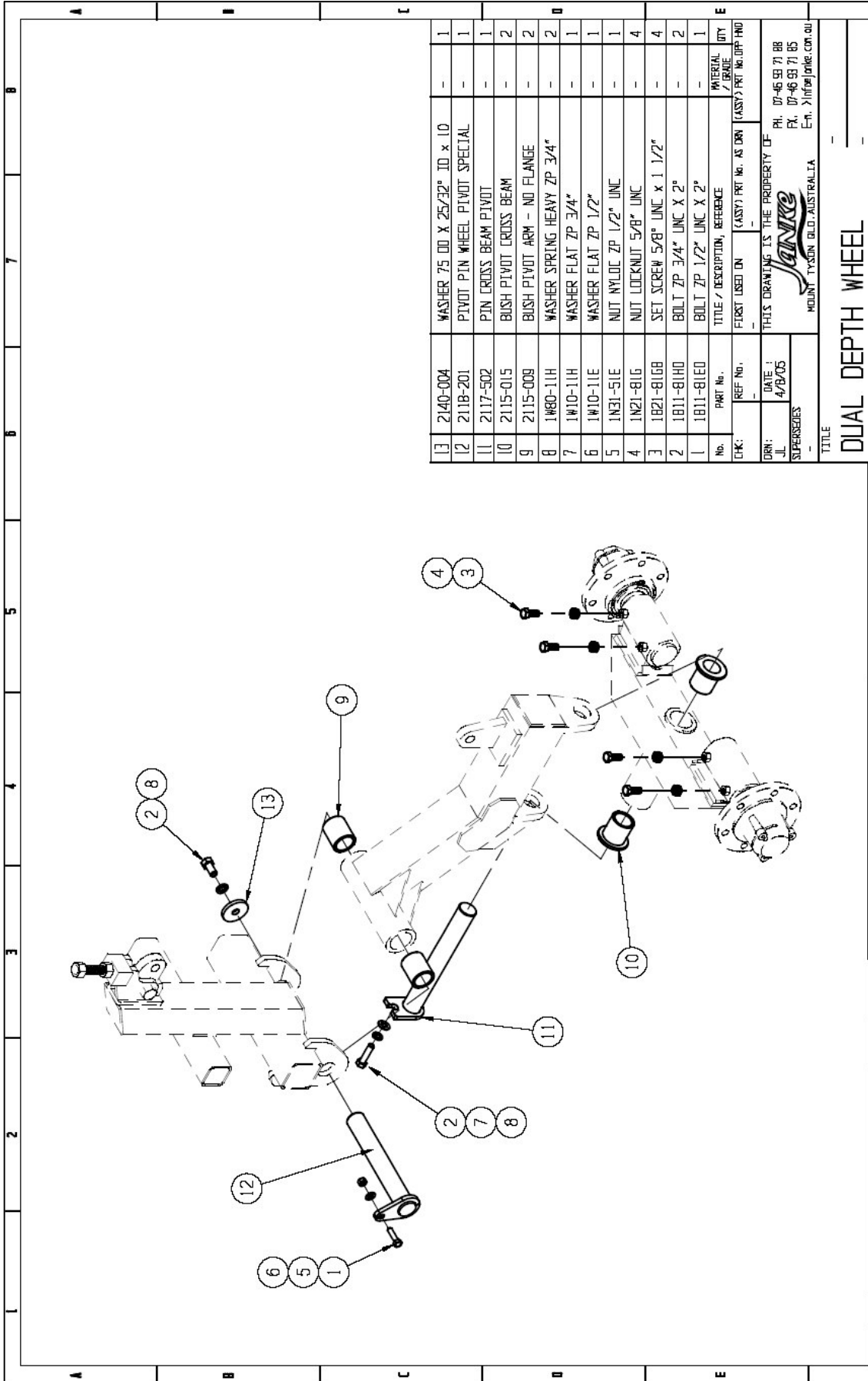


Price List for Wing Fold Kit
2118-107-K

Individual Components:

No.	Part No.	Description	Qty.
1	1050-205	LYNCH PIN 11 X 42mm (B2700)	1
2	1099-001	GREASE NIPPLE STR 1/8"BSP	1
3	1W1B-11M	WASHER HEAVY FLAT ZP 1 1/4"	2
4	2118-107	PIN ASSY - WING HINGE	1 ²

² Janke (Australia) reserves the right to alter the pricing of any of its products without notice.



13	2140-004	WASHER 75 00 X 25/32" ID x 10	-	1
12	2118-201	PIVOT PIN WHEEL PIVOT SPECIAL	-	1
11	2117-502	PIN CROSS BEAM PIVOT	-	1
10	2115-015	BUSH PIVOT CROSS BEAM	-	2
9	2115-009	BUSH PIVOT ARM - NO FLANGE	-	2
8	1480-11H	WASHER SPRING HEAVY ZP 3/4"	-	2
7	1410-11H	WASHER FLAT ZP 3/4"	-	1
6	1410-11E	WASHER FLAT ZP 1/2"	-	1
5	1431-51E	NUT NYLOC ZP 1/2" UNC	-	1
4	1421-81G	NUT LOCKNUT 5/8" UNC	-	4
3	1421-81G8	SET SCREW 5/8" UNC x 1.1/2"	-	4
2	1411-81H0	BOLT ZP 3/4" UNC X 2"	-	2
1	1411-81E0	BOLT ZP 1/2" UNC X 2"	-	1
No.	PART No.	TITLE / DESCRIPTION, REFERENCE	MATERIAL / GRADE	QTY
CHK:	REF No.	FIRST USED ON (ASSY) PRT No. OR PRT		

DRN: J.L.
 DATE: 4/8/05
 SUPERSEDES: -
 THIS DRAWING IS THE PROPERTY OF
JANKO
 MOUNT TYSON BLD. AUSTRALIA
 PH. 07-46 59 71 88
 FX. 07-46 59 71 85
 E-MAIL: info@janko.com.au

TITLE		DUAL DEPTH WHEEL	
REV. ZONE	DESCRIPTION OF CHANGE	BY	DATE
-	MAX. -		
-	MIN. -		
UNLESS SPECIFIED MATERIAL - STEEL TO:		FABRICATION	
AS3678/250 - (MS) PLATE/BAR/etc		DIM. +/- 1.0	
AS1163/350/C350 - RHS/SIS		ANGULAR +/- 1°	
AS1074 - (NB) NOMINAL BORE PIPE		HOLE CRS +/- 0.5	
AS1442/EN - 14A (HB) HOLLOW BAR			
TOLERANCES UNLESS SPECIFIED			
MACHINING			
DIM. +/- 0.05			
ANGULAR +/- 1°			
FINISH			
6.4UM			
HOLE CRS +/- 0.5			
REV. ZONE	DESCRIPTION OF CHANGE	BY	DATE
-	MAX. -		
-	MIN. -		
UNLESS SPECIFIED MATERIAL - STEEL TO:		FABRICATION	
AS3678/250 - (MS) PLATE/BAR/etc		DIM. +/- 1.0	
AS1163/350/C350 - RHS/SIS		ANGULAR +/- 1°	
AS1074 - (NB) NOMINAL BORE PIPE		HOLE CRS +/- 0.5	
AS1442/EN - 14A (HB) HOLLOW BAR			
TOLERANCES UNLESS SPECIFIED			
MACHINING			
DIM. +/- 0.05			
ANGULAR +/- 1°			
FINISH			
6.4UM			
HOLE CRS +/- 0.5			

REV. ZONE	DESCRIPTION OF CHANGE	BY	DATE
-	MAX. -		
-	MIN. -		
UNLESS SPECIFIED MATERIAL - STEEL TO:		FABRICATION	
AS3678/250 - (MS) PLATE/BAR/etc		DIM. +/- 1.0	
AS1163/350/C350 - RHS/SIS		ANGULAR +/- 1°	
AS1074 - (NB) NOMINAL BORE PIPE		HOLE CRS +/- 0.5	
AS1442/EN - 14A (HB) HOLLOW BAR			
TOLERANCES UNLESS SPECIFIED			
MACHINING			
DIM. +/- 0.05			
ANGULAR +/- 1°			
FINISH			
6.4UM			
HOLE CRS +/- 0.5			
REV. ZONE	DESCRIPTION OF CHANGE	BY	DATE
-	MAX. -		
-	MIN. -		
UNLESS SPECIFIED MATERIAL - STEEL TO:		FABRICATION	
AS3678/250 - (MS) PLATE/BAR/etc		DIM. +/- 1.0	
AS1163/350/C350 - RHS/SIS		ANGULAR +/- 1°	
AS1074 - (NB) NOMINAL BORE PIPE		HOLE CRS +/- 0.5	
AS1442/EN - 14A (HB) HOLLOW BAR			
TOLERANCES UNLESS SPECIFIED			
MACHINING			
DIM. +/- 0.05			
ANGULAR +/- 1°			
FINISH			
6.4UM			
HOLE CRS +/- 0.5			

REV. ZONE	DESCRIPTION OF CHANGE	BY	DATE
-	MAX. -		
-	MIN. -		
UNLESS SPECIFIED MATERIAL - STEEL TO:		FABRICATION	
AS3678/250 - (MS) PLATE/BAR/etc		DIM. +/- 1.0	
AS1163/350/C350 - RHS/SIS		ANGULAR +/- 1°	
AS1074 - (NB) NOMINAL BORE PIPE		HOLE CRS +/- 0.5	
AS1442/EN - 14A (HB) HOLLOW BAR			
TOLERANCES UNLESS SPECIFIED			
MACHINING			
DIM. +/- 0.05			
ANGULAR +/- 1°			
FINISH			
6.4UM			
HOLE CRS +/- 0.5			



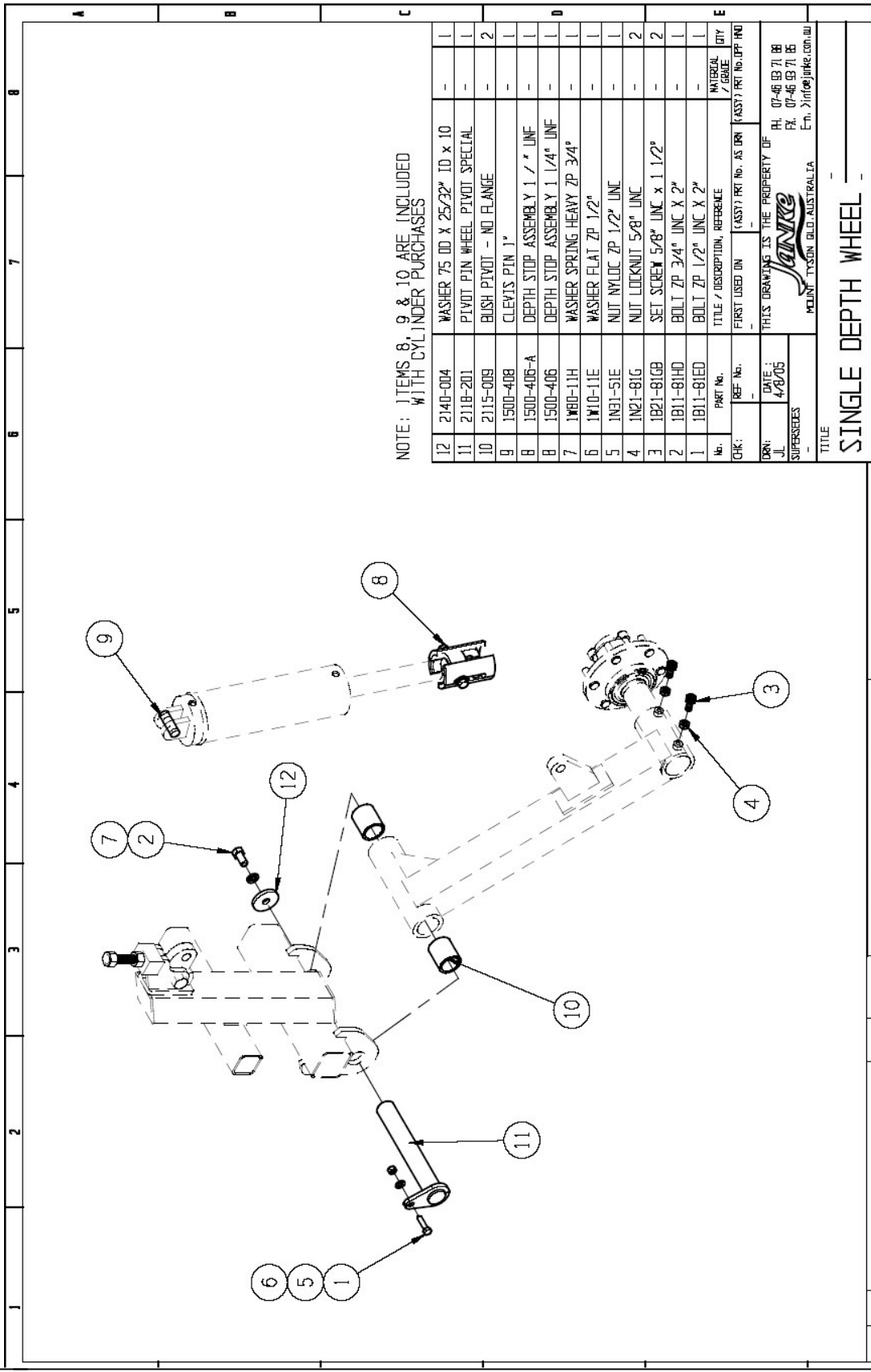
3

Price List for Dual Depth Wheel **2150-XXX**

Individual Components:

No.	Part No.	Description	Qty.
1	1B11-81ED	BOLT ZP 1/2 UNC X 2"	1
2	1B11-81HD	BOLT ZP 3/4 UNC X 2"	2
3	1B21-81GB	SET SCREW 5/8" UNC x 1 1/2"	4
4	1N21-81G	NUT NYLOC ZP 5/8"	4
5	1N31-51E	NUT NYLOC ZP 1/2"UNC	1
6	1W10-11E	WASHER FLAT ZP 1/2"	1
7	1W10-11H	WASHER FLAT ZP 3/4"	1
8	1W80-11H	WASHER SPRING HEAVY ZP 3/4"	2
9	2115-009	BUSH PIVOT ARM- NO FLANGE	2
10	2115-015	BUSH PIVOT CROSS BEAM	2
11	2117-502	PIN CROSS BEAM PIVOT	1
12	2118-201	PIVOT PIN WHEEL PIVOT	1
13	2140-004	WASHER 75 O/D X 25/32" ID, 10	1

³ Janke (Australia) reserves the right to alter the pricing of any of its products without notice.



NOTE: ITEMS 8, 9 & 10 ARE INCLUDED WITH CYLINDER PURCHASES

ITEM NO.	DESCRIPTION	QTY
12	WASHER 75 ID X 25/32" ID X 10	1
11	PIVOT PIN WHEEL PIVOT SPECIAL	1
10	BUSH PIVOT - NO FLANGE	2
9	CLEVIS PIN 1"	1
8	DEPTH STOP ASSEMBLY 1 / * UNF	1
8	DEPTH STOP ASSEMBLY 1 / 1/4" UNF	1
7	WASHER SPRING HEAVY ZP 3/4"	1
6	WASHER FLAT ZP 1/2"	1
5	NUT NYLOC ZP 1/2" UNC	1
4	NUT LOCKNUT 5/8" UNC	2
3	SET SCREW 5/8" UNC X 1 1/2"	2
2	BOLT ZP 3/4" UNC X 2"	1
1	BOLT ZP 1/2" UNC X 2"	1

TITLE: SINGLE DEPTH WHEEL
 PART No.: 2150-XXX
 SIZE: A 4L
 APPROVED: [Signature]
 SCALE: 1:1
 TYPE: NON STANDARD
 REV: -
 MATERIAL / QTY: -
 FIRST USED ON: (ASST) PRI NO. AS DRN (ASST) PRI NO. UPT. HDU
 THIS DRAWING IS THE PROPERTY OF JANKO
 P.O. BOX 46 69 71 BR
 FAX: 07-46 69 71 66
 E-MAIL: info@janko.com.au
 MELBOURNE, AUSTRALIA

REV.	ZONE	DESCRIPTION OF CHANGE	BY	DATE
-	-	MAX.	-	-
-	-	MIN.	-	-

TOLERANCES UNLESS SPECIFIED		UNLESS SPECIFIED	
MACHINING	±0.05	MATERIAL	STEEL TO:
DTM	±0.05	AS3678/230	(MS) PLATE/BAR/Etc
ANGULAR	±0.05°	AS1163/350/C350	- RISK/SHS
FINISH	6.4UM	AS1074	(NB) NOMINAL BORE PIPE
		AS1442/2FN	(14A CHB) HOLLOW BAR

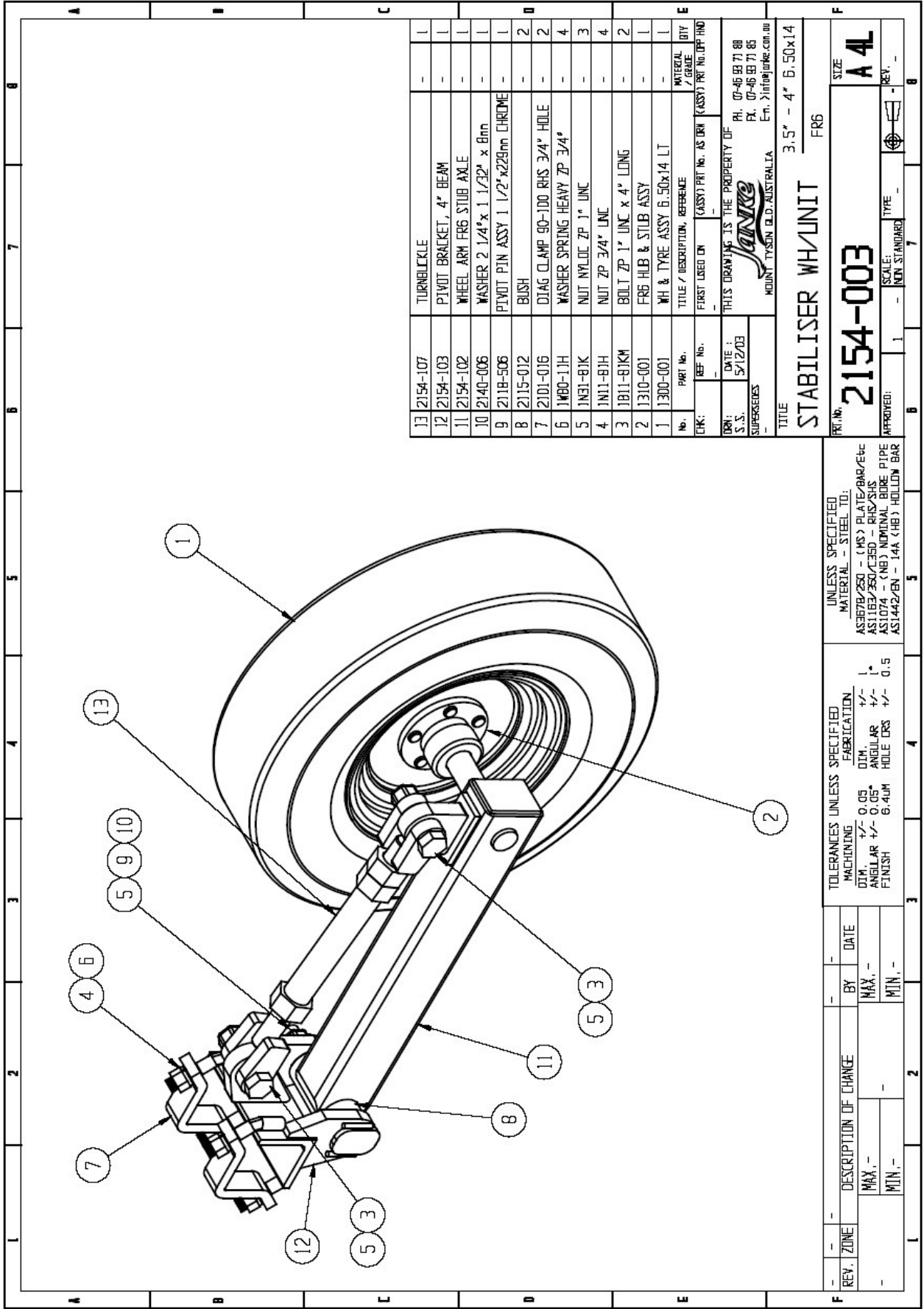


Price List for Single Depth Wheel **2150-XXX**

Individual Components:

No.	Part No.	Description	Qty.
1	1B11-81ED	BOLT ZP 1/2" UNC x 2"	1
2	1B11-81HD	BOLT ZP 3/4/ UNC x 2"	1
3	1B21-81GB	SET SCREW 5/8" x 1 1/2"	2
4	1N21-81G	NUT NYLOC 5/8" UNC	2
5	1N31-51E	NUT NYLOC 1/2" UNC	1
6	1W10-11E	WASHER FLAT ZP 1/2"	1
7	1W80-11H	WASHER SPRINGN HEAVY ZP 3/4"	1
8	1500-406	DEPTH STOP ASSY. 1 1/4" UNF	1
8	1500-406-A	DEPTH STOP ASSY. 1" UNF	1
9	1500-408	CLEVIS PIN 1"	1
10	2115-009	BUSH PIVOT- NO FLANGE	2
11	2118-201	PIVOT PIN WHEEL PIVOT SPECIAL	1
12	2140-004	WASHER 75 OD x 25/32" ID x 10	1

⁴ Janke (Australia) reserves the right to alter the pricing of any of its products without notice.



QTY	REF. NO.	PART No.	TITLE / DESCRIPTION, REFERENCE	FIRST USED ON	(ASSY) PART No.	AS DRN	(ASSY) PART No.	QTY
13	2154-107		TURNBUCKLE					1
12	2154-103		PIVOT BRACKET, 4" BEAM					1
11	2154-102		WHEEL ARM FRG STUB AXLE					1
10	2140-006		WASHER 2 1/4" x 1 1/32" x 8mm					1
9	2118-506		PIVOT PIN ASSY 1 1/2" x 229mm CHROME					1
8	2115-012		BUSH					2
7	2101-016		DIAG CLAMP 90-100 RHS 3/4" HOLE					2
6	1W80-11H		WASHER SPRING HEAVY ZP 3/4"					4
5	1N91-81K		NUT NYLOC ZP 1" UNC					3
4	1M11-81KH		NUT ZP 3/4" UNC					4
3	1B11-81KH		BOLT ZP 1" UNC x 4" LONG					2
2	1310-001		FRG HUB & STUB ASSY					1
1	1300-001		WH & TYRE ASSY 6.50x14 LT					1

DRN: 5/12/03
 S.S.
 SUPERSEDES:

THIS DRAWING IS THE PROPERTY OF
 FR. 07-46 99 71 88
 FX. 07-46 99 71 85
 Em. 2101@janke.com.au
 HEADQUARTERS, AUSTRALIA

JANKE
 3.5" - 4" 6.50x14
 FR6

TITLE: STABILISER WH/UNIT
 SIZE: A 4
 REF. NO.: 2154-003
 SCALE: 1:1
 NON-STANDARD
 APPROVED: 1

UNLESS SPECIFIED MATERIAL - STEEL TO:
 AS3678/250 - (MS) PLATE/BAR/Etc
 AS1163/350/C350 - RHS/SHS
 AS1074 - (NB) NOMINAL BORE PIPE
 AS1442/EN - 14A (HB) HOLLOW BAR

TOLERANCES UNLESS SPECIFIED - FABRICATION
 MACHINING +/- 0.05 DIM +/- 0.5
 ANGLE AR +/- 0.05 ANGLE AR +/- 0.5
 FINISH 6.4UM HOLE DRG +/- 0.5

REV.	ZONE	DESCRIPTION OF CHANGE	BY	DATE
		MAX.		
		MIN.		



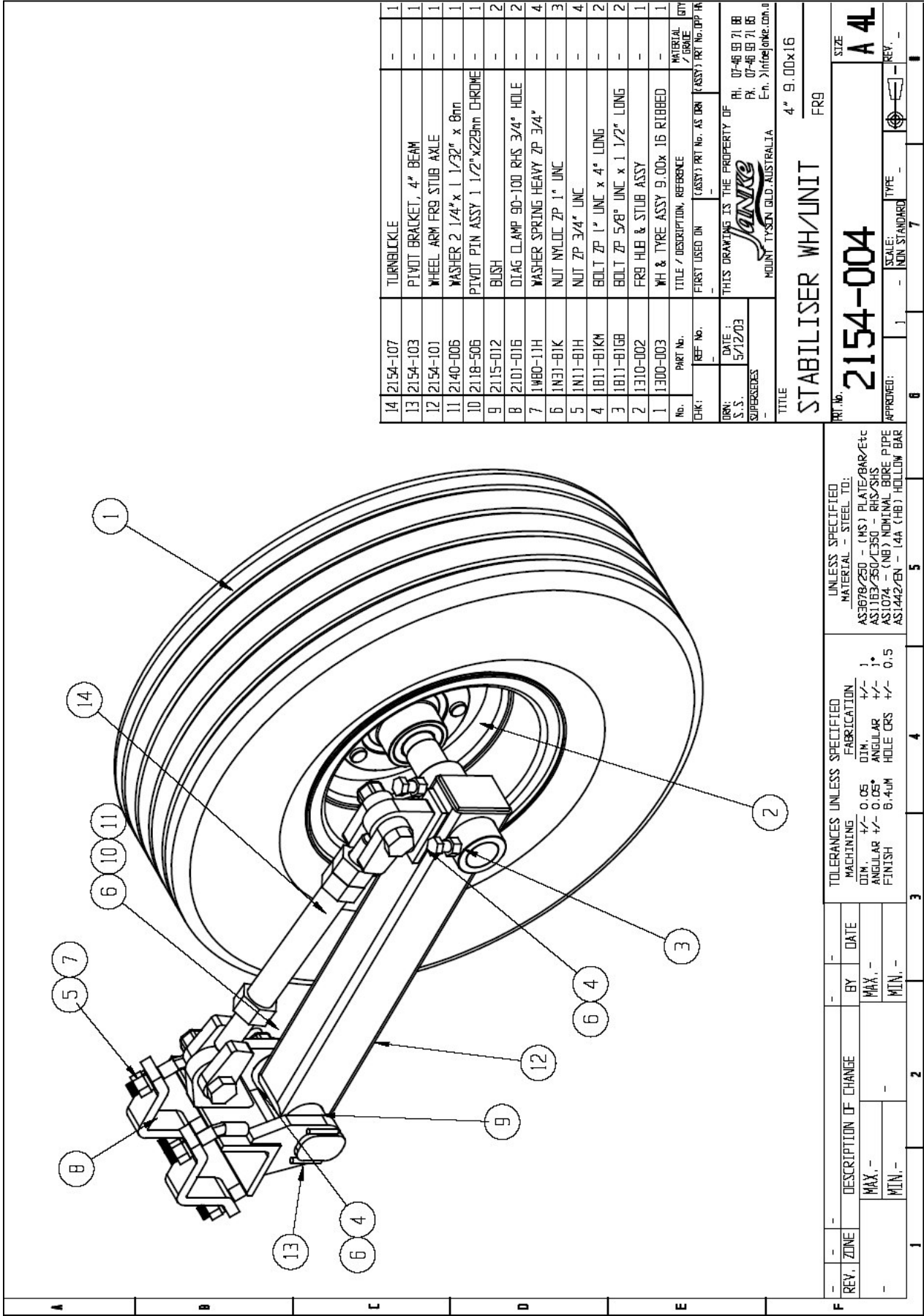
5

Price List for Stabiliser Wheel Unit **2154-003**

Individual Components:

No.	Part No.	Description	Qty.
1	1300-001	WH & TYRE ASSY 185 X 14 LT	1
2	1310-001	FR6 HUB & STUB ASSEMBLY	1
3	1B11-81KM	BOLT ZP 1 UNC X 4"	2
4	1N11-81H	NUT ZP 3/4"UNC	4
5	1N31-81K	NUT NYLOC ZP 1" UNC	3
6	1W80-11H	WASHER SPRING HEAVY ZP 3/4"	4
7	2101-016	DIAGONAL CLAMP 90/100 RHS 3/4 HOLE X 40	2
8	2115-012	BUSH	2
9	2118-506	PIVOT PIN ASSY, 1 1/2" X 229MM CHROME	1
10	2140-006	WASHER 2 1/4" X 1 1/32" X 8mm	1
11	2154-102	WH ARM HOLDEN STUB AXLE PIVOT BUSH	1
12	2154-103	PIVOT BRACKET, 4" BEAM	1
13	2154-107	TURNBUCKLE STABILISER WH - WIDELINE	1

⁵ Janke (Australia) reserves the right to alter the pricing of any of its products without notice.



14	2154-107	TURNBUCKLE	-	1
13	2154-103	PIVOT BRACKET, 4" BEAM	-	1
12	2154-101	WHEEL ARM FR9 STUB AXLE	-	1
11	2140-006	WASHER 2 1/4" x 1 1/32" x 8mm	-	1
10	2118-506	PIVOT PIN ASSY 1 1/2" x 225mm CHROME	-	1
9	2115-012	BUSH	-	2
8	2101-016	DIAG CLAMP 90-100 RHS 3/4" HOLE	-	2
7	1W80-11H	WASHER SPRING HEAVY ZP 3/4"	-	4
6	1N31-81K	NUT NYLOC ZP 1" UNC	-	3
5	1N11-81K	NUT ZP 3/4" UNC	-	4
4	1B11-81KM	BOLT ZP 1" UNC x 4" LONG	-	2
3	1B11-81GB	BOLT ZP 5/8" UNC x 1 1/2" LONG	-	2
2	1310-002	FR9 HUB & STUB ASSY	-	1
1	1300-003	WH & TYRE ASSY 9.00x 16 RIBBED	-	1
No.	PART No.	TITLE / DESCRIPTION, REFERENCE	MATERIAL	QTY
CHK:	REF No.	(ASSY) PRT No. AS DRN	(ASSY) PRT No. PRT No.	
DRN:	DATE:	THIS DRAWING IS THE PROPERTY OF		
S.S.	5/12/03	RI, 07-46 59 71 88		
SUPERSEDES		PK, 07-46 59 71 85		
		Ern. >info@jankes.com.au		
		MOUNT-TYSEN QLD-AUSTRALIA		
		TITLE		
		STABILISER WH/UNIT		
		4" 9.00x16		
		FR9		

REV.	ZONE	DESCRIPTION OF CHANGE	BY	DATE
1				
2				
3				
4				
5				
6				
7				

UNLESS SPECIFIED MATERIAL - STEEL TO: AS3678/250 - (MS) PLATE/BAR/Etc AS1163/350/1350 - RHS/SHS AS1074 - (NB) NOMINAL BORE PIPE AS1442/2EN - 14A (HB) HOLLOW BAR	TOLERANCES UNLESS SPECIFIED MACHINING DIM. +/- 0.05 ANGLEULAR +/- 0.05 FINISH 8-4UM HOLE CRS +/- 0.5	UNLESS SPECIFIED FABRICATION DIM. +/- 1° ANGLEULAR +/- 1° HOLE CRS +/- 0.5	MATERIAL - STEEL TO: AS3678/250 - (MS) PLATE/BAR/Etc AS1163/350/1350 - RHS/SHS AS1074 - (NB) NOMINAL BORE PIPE AS1442/2EN - 14A (HB) HOLLOW BAR
--	---	--	---

PRT No. **2154-004** SIZE **A 4L**
 SCALE: **1** - NON STANDARD TYPE **7**
 APPROVED: **1** - **7**



6

Price List for Stabiliser Wheel Unit **2154-004**

Individual Components:

No.	Part No.	Description	Qty.
1	1300-003	WH & TYRE ASSY 9.00 X 16 MULTI-RIB 5ST	1
2	1310-002	HUB & STUB ASSY FR9 - 5 STUD	1
3	1B11-81GB	BOLT ZP 5/8 UNC X 1 1/2"	2
4	1B11-81KM	BOLT ZP 1 UNC X 4"	2
5	1N11-81H	NUT ZP 3/4"UNC	4
6	1N31-81K	NUT NYLOC ZP 1" UNC	3
7	1W80-11H	WASHER SPRING HEAVY ZP 3/4"	4
8	2101-016	DIAGONAL CLAMP 90/100 RHS 3/4 HOLE X 40	2
9	2115-012	BUSH T/HD F1500	2
10	2118-506	PIVOT PIN ASSY, 1 1/2" X 229MM CHROME	1
11	2140-006	WASHER 2 1/4" X 1 1/32" X 8mm	1
12	2154-101	WH ARM FR9 STUB AXLE	1
13	2154-103	PIVOT BRACKET, 4" BEAM	1
14	2154-107	TURNBUCKLE STABILISER WH - WIDELINE	1

⁶ Janke (Australia) reserves the right to alter the pricing of any of its products without notice.