



Section 2

Points

¹ Janke (Australia) reserves the right to alter the pricing of any of its products without notice.



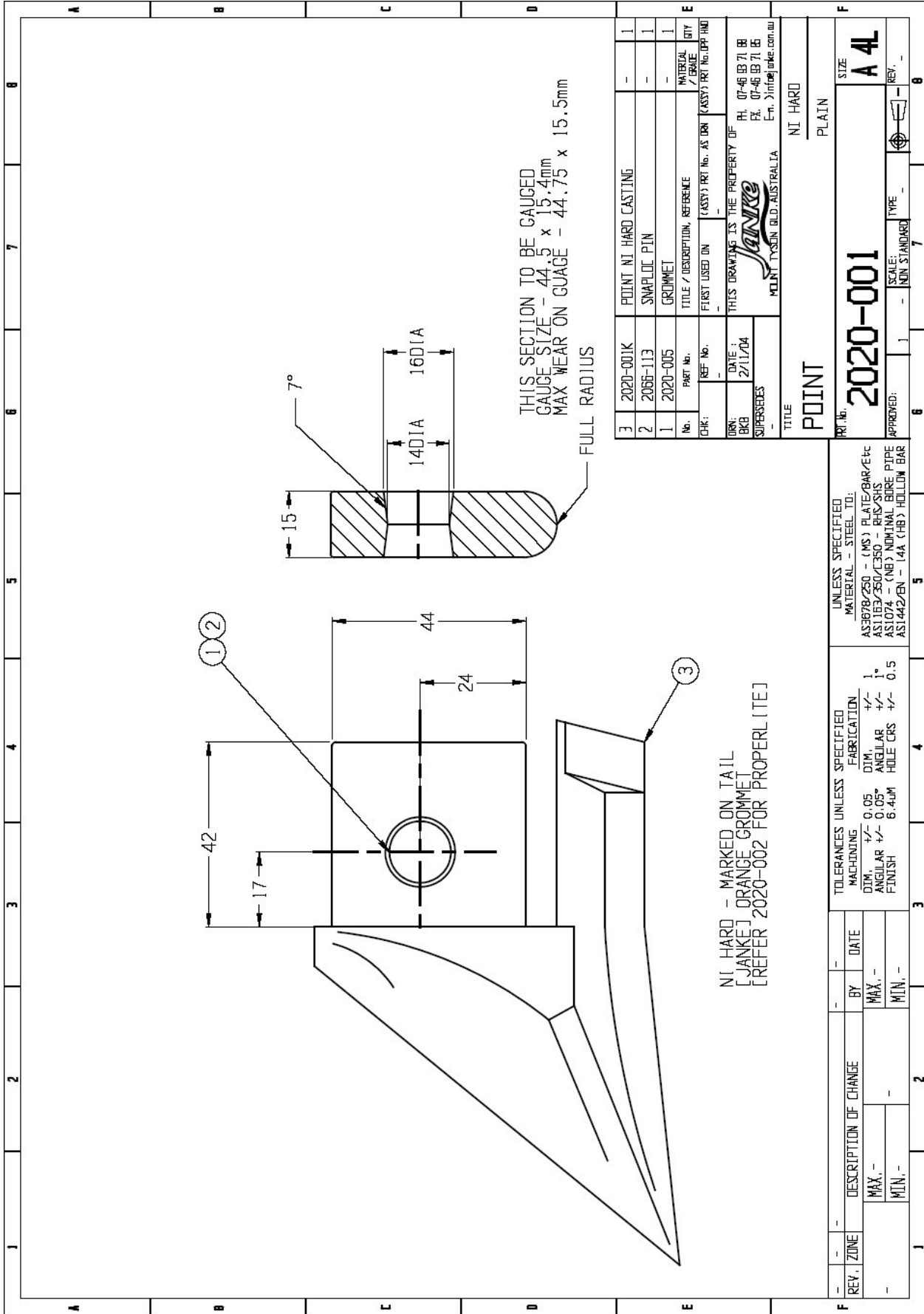
2

Price List for Points **2020-0XX**

Individual Components:

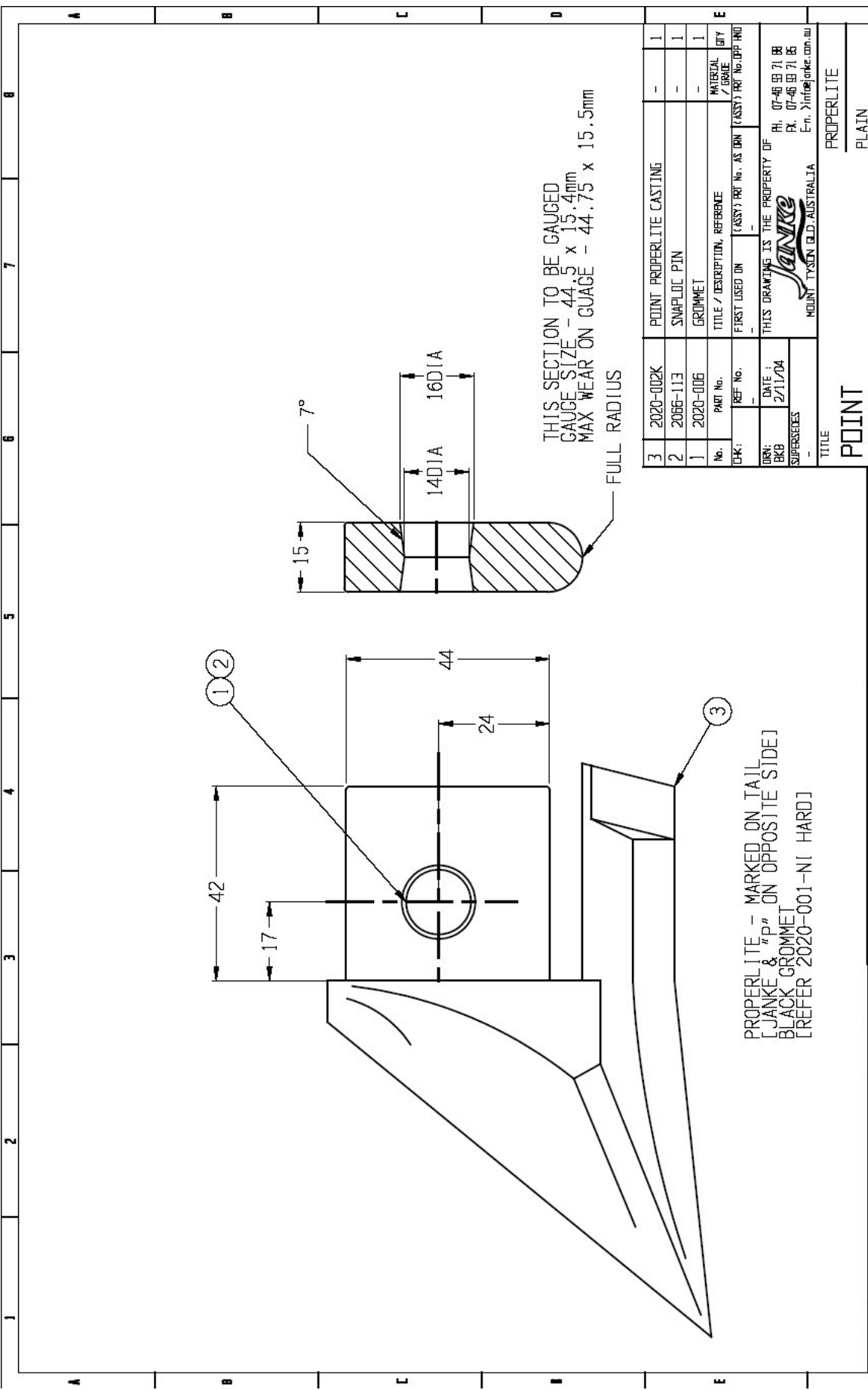
No.	Part No.	Description	Qty.
1	2020-001	NI HARD POINT PLAIN WITH GROMMET & PIN	1
2	2020-002	PROPERLITE POINT PLAIN WITH PIN	1
3	2020-003	NI HARD POINT WITH DIAMOND TUNGSTEN + GROMMET & PIN	1
4	2020-004	PROPERLITE POINT + D/TUNGSTEN, G & P	1
5	2020-005	GROMMET ORANGE	1
6	2020-006	GROMMET BLACK	1
7	2020-007	P/POINT (PROFILED) SHORT 12MM BIS	1
8	2020-008	P/POINT (PROFILED) HIGHER FRT	1
9	2020-018	KNIFE TYNE (WEISE) 1.25" TUBE, CARBO	1
10	2020-022	POINT (PROFILED) SINGLE SIDE WING HANDED	1
11	2020-023	PLANTING POINT CAST TRIPLE TUNGSTEN	1
12	2020-030	POINT PLANTING CAST STEEL +T, G & P	1
13	2020-031	POINT PLANTING CAST NI-HARD WINGLESS WITH TUNGSTEN	1
14	2020-032	POINT PLANTING 27% CHROME WINGLESS	1
15	2020-034	P/POINT (BISALLOY) DEEP,GROMET,SNAPLOCK PIN	1
16	2020-061	P/POINT (PROFILED) MID 12MM BIS	1

² Janke (Australia) reserves the right to alter the pricing of any of its products without notice.



3	2020-001K	POINT NI HARD CASTING	1
2	2065-113	SWAPLOC PIN	1
1	2020-005	GROMMET	1
No.	PNMT No.	TITLE / DESCRIPTION, REFERENCE	MATERIAL QUANTITY
CHK:	REF No.	(ASSY) RTI No. AS DRN (ASSY) RTI No. (PP INT)	
DRN:	DATE:	THIS DRAWING IS THE PROPERTY OF	RI. 07-46 93 71 88
BBB	2/11/204		FA. 07-46 93 71 85
SUPERSEDES			Em. > info@janke.com.au
			POINT TROSDIN BLD., AUSTRALIA
TITLE		POINT	NI HARD
RTI No.		2020-001	PLAIN
APPROVED:			
SCALE:		1 -	NON STANDARD
TYPE:			
REV.			
SIZE:		A 4L	

UNLESS SPECIFIED MATERIAL - STEEL TO:		AS3078/250 - (MS) PLATE/BAR/Etc	
		AS1163/350/350 - RIS/SHS	
		AS1074 - (NB) NOMINAL BORE PIPE	
		AS1442/EN - 14A (HB) HOLLOW BAR	
TOLERANCES UNLESS SPECIFIED		FABRICATION	
MACHINING	±0.05	ANGULAR	±1°
FINISH	6.4µM	HOLE CRS	±0.5
BY	DATE		
MAX.	MIN.		



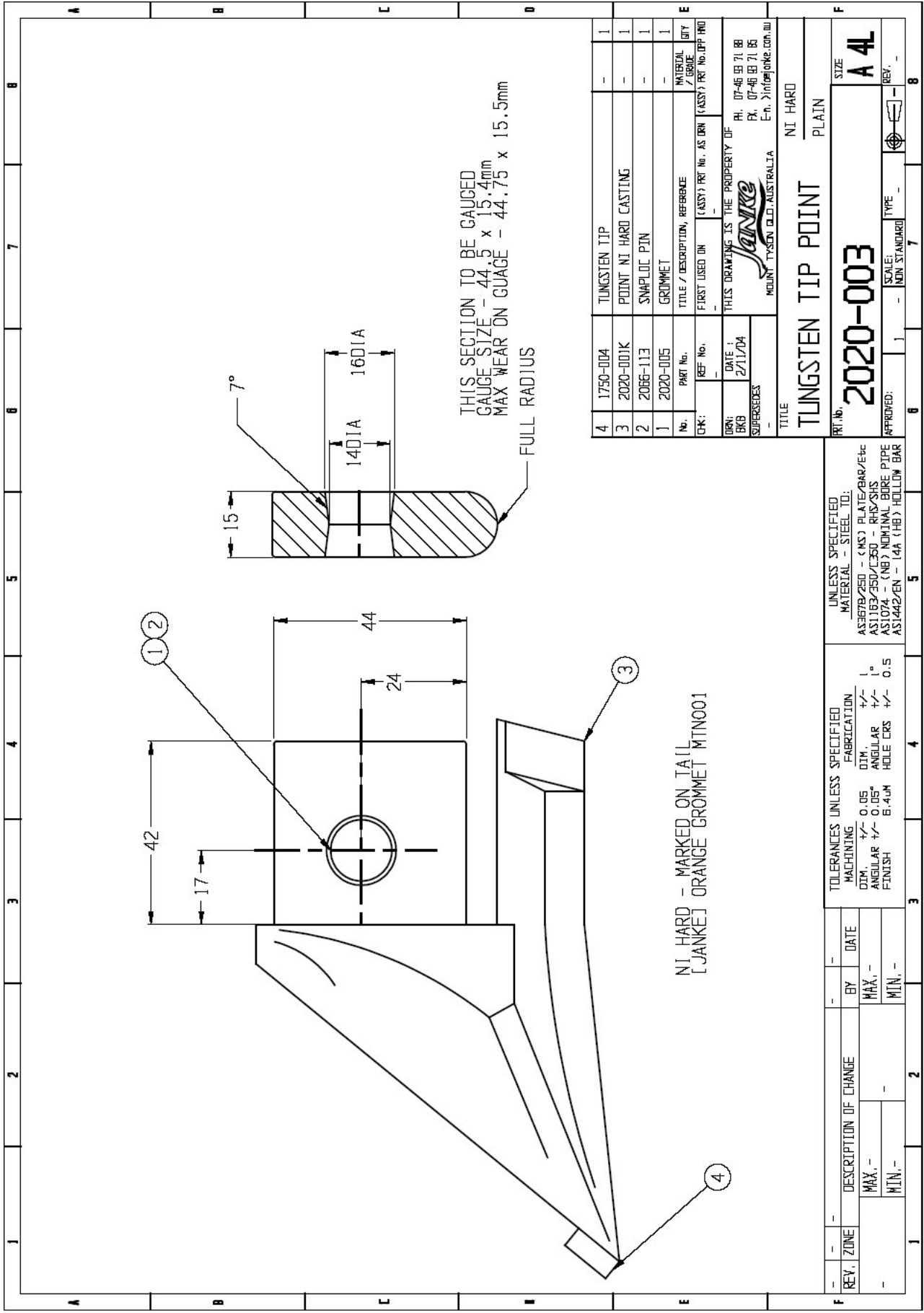
THIS SECTION TO BE GAUGED
 GAUGE SIZE - 44.5 x 15.4mm
 MAX WEAR ON GAUGE - 44.75 x 15.5mm

PROPERLITE - MARKED ON TAIL
 L JANKO & "P" ON OPPOSITE SIDE
 BLACK GROMMET
 [REFER 2020-001-NI HARD]

3	2020-002K	POINT PROPERLITE CASTING	-	1
2	2066-113	SWAPLOC PIN	-	1
1	2020-006	GROMMET	-	1
No.	PART No.	TITLE / DESCRIPTION, REFERENCE	MATERIAL / GRADE	QTY
CHK:	REF. No.	FIRST USED ON (ASSY), PART No., AS. DWN (ASSY), PART No., APP. ING		
DRN:	DATE:	THIS DRAWING IS THE PROPERTY OF		
BRB	2/11/04	JANKO		
SUPERSEDES		MOUNT TYSSEN (Q.D.) AUSTRALIA Ph. 07-46 99 71 80 E-m. jinfo@janko.com.au		
TITLE				
POINT				
PROPERLITE				
PLAIN				

REV.	ZONE	DESCRIPTION OF CHANGE	BY	DATE
		MAX.		
		MIN.		
PART No. 2020-002				
SIZE A 4L				
APPROVED:				
SCALE: 1:1 (MIN. STANDARD)				
TYPE: -				
REV. -				

UNLESS SPECIFIED		MATERIAL - STEEL TO:	
AS3678/250 - (MS) PLATE/GAR/Etc		AS1163/350/CS0 - RHS/SHS	
AS11074 - (NB) NOMINAL BORE PIPE		AS1442/EN - (4A (HB) HOLLOW BAR	
TOLERANCES UNLESS SPECIFIED		FABRICATION	
DIM.	+/- 0.05	DTM.	+/- 1°
ANGULAR	+/- 0.05°	ANGULAR	+/-
FINISH	6.4um	HOLE CCS	+/- 0.5



NI HARD - MARKED ON TAIL
[JANKE] ORANGE GROMMET MTN001

THIS SECTION TO BE GAUGED
GAUGE SIZE - 44.5 x 15.4mm
MAX WEAR ON GAUGE - 44.75 x 15.5mm
FULL RADIUS

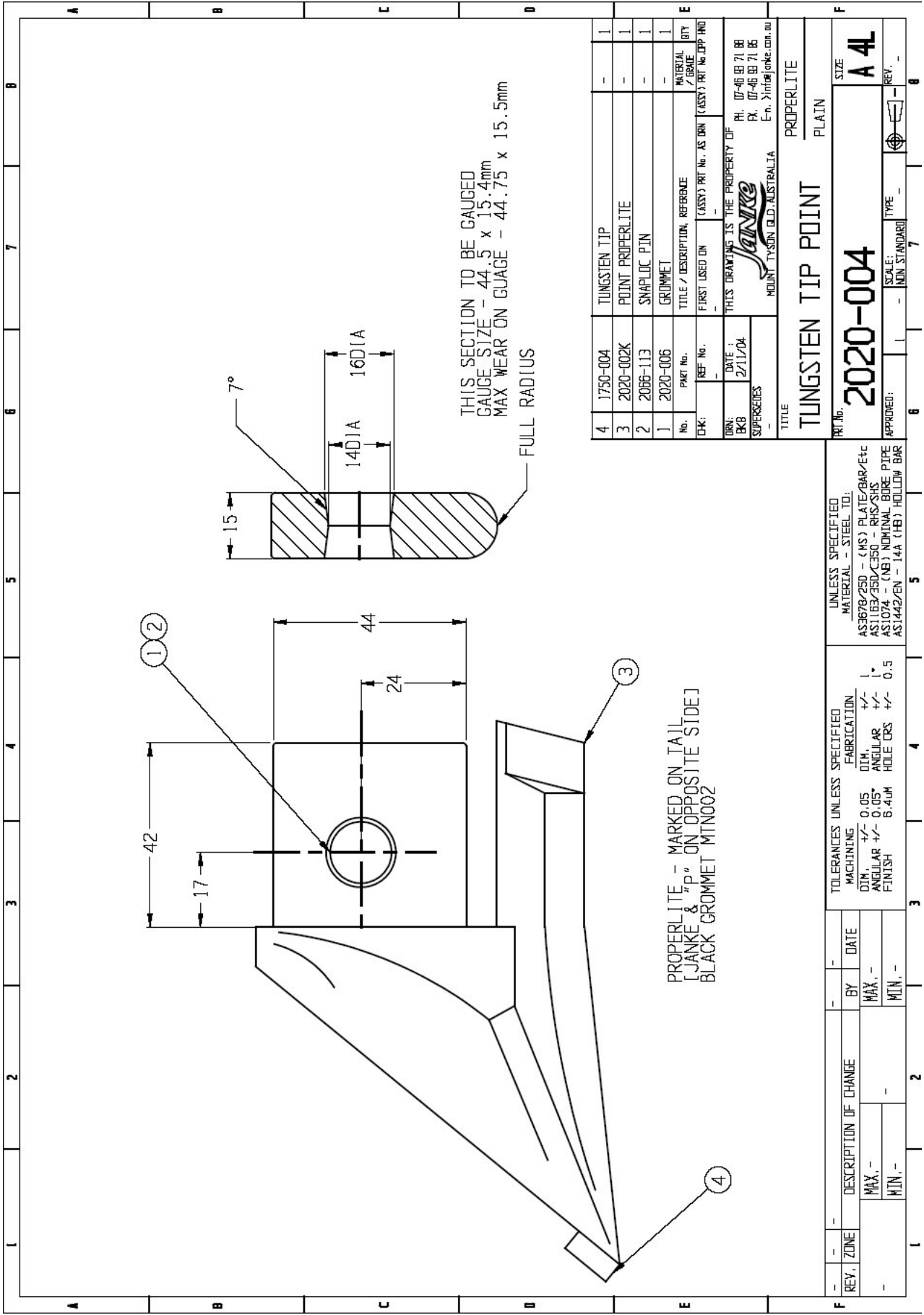
4	1750-004	TUNGSTEN TIP	-	1
3	2020-001K	POINT NI HARD CASTING	-	1
2	2066-113	SWAPLOE PIN	-	1
1	2020-005	GROMMET	-	1
No.		PART No.	TITLE / DESCRIPTION, REFERENCE	MATERIAL QUOTE / QTY
CHK:		REF No.	(ASSY) PRJ No. AS DRN (ASSY) PRJ No. UPR PRJ	
DRN:		DATE:	THIS DRAWING IS THE PROPERTY OF	Pr. 07-46 89 71 88
BKG		2/11/04		Pk. 07-46 89 71 85
SUPERSEDES				En. 3/info@janke.com.au

TITLE		NI HARD
TLUNGSTEN TIP POINT		PLAIN
RT/No.	SIZE	A 4L
2020-003		
APPROVED:	SCALE:	NON STANDARD
	TYPE	
	REV.	

UNLESS SPECIFIED MATERIAL - STEEL TO:
AS3678/250 - (MS) PLATE/BAR/Etc
AS1163/350/450 (L350) RIPS/SIS
AS1074 - (NB) NOMINAL BORE PIPE
AS1442/2EN - 14A (HB) HOLLOW BAR

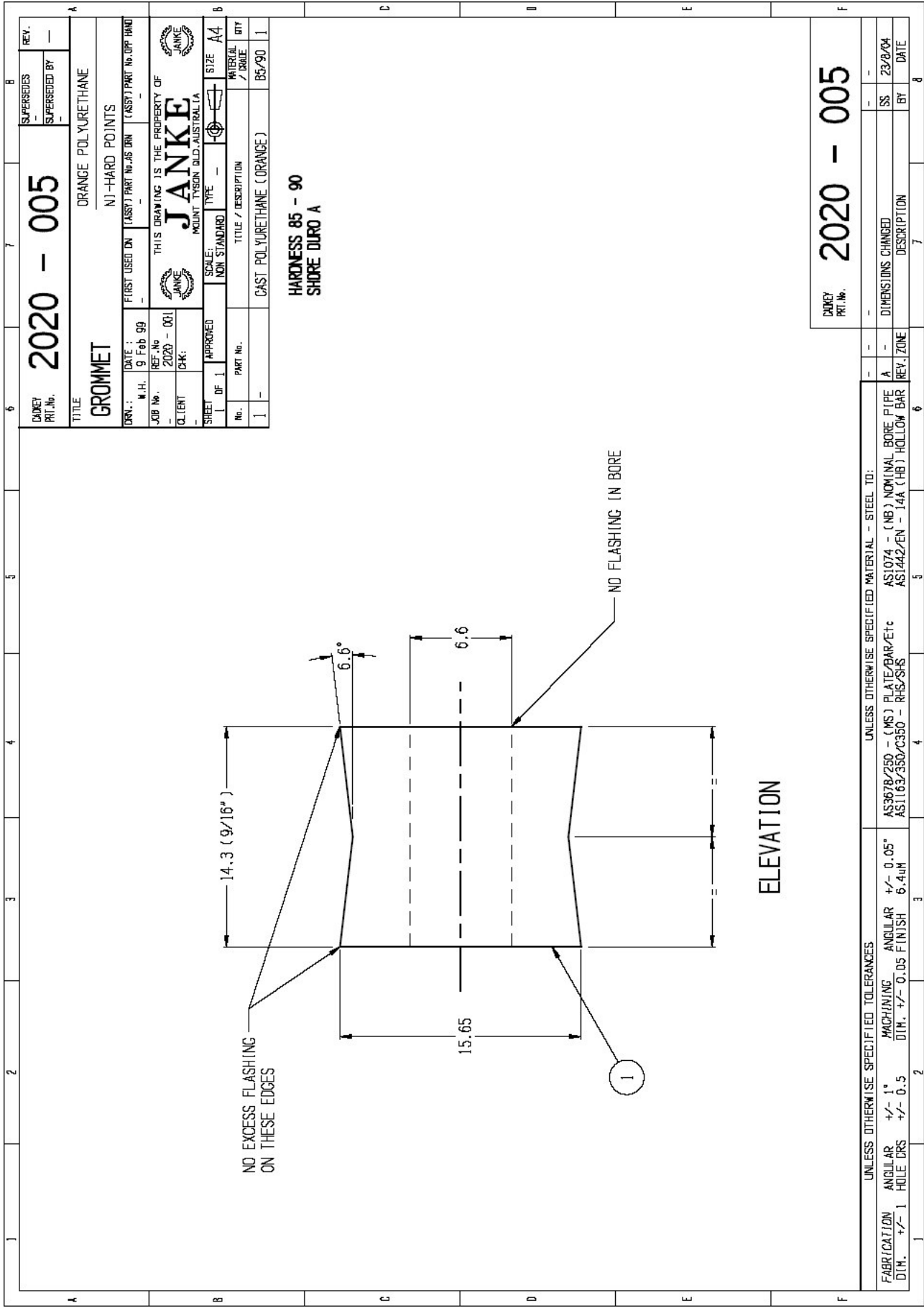
TOLERANCES UNLESS SPECIFIED	FABRICATION
MACHINING	+
DIM:	+
ANGULAR	+
FINISH	+
0.05	0.5
0.05	1.0
B-4UM	0.5
HOLE CRS	

REV.	ZONE	DESCRIPTION OF CHANGE	BY	DATE
		MAX.		
		MIN.		



4	1750-004	TUNGSTEN TIP	-	1
3	2020-002K	POINT PROPERLITE	-	1
2	2066-113	SWAPLOC PIN	-	1
1	2020-006	GROMMET	-	1
No.		TITLE / DESCRIPTION, REFERENCE	MATERIAL QTY	
CHK:	REF. No.	(CLASS) PART No. AS DRN	(CLASS) PART No. CPP HND	
DRN:	DATE:	THIS DRAWING IS THE PROPERTY OF		
BKB	2/11/04	 MOUNT TYSON QLD AUSTRALIA Ph: 07-46 89 71 88 Fax: 07-46 89 71 86 E-mail: info@janke.com.au		
SUPER SERIES		TITLE TUNGSTEN TIP POINT PROPERLITE PLAIN		
PART No.		SIZE		
2020-004		A 4L		
APPROVED:		SCALE:	TYPE	REV.
-		NON STANDARD	-	-

UNLESS SPECIFIED MATERIAL - STEEL TO:		TOLERANCES UNLESS SPECIFIED FABRICATION	
AS3678/250 - (MS) PLATE/BAR/Etc		DIM. +/- 0.05	
AS1163/350/C350 - RHS/SIS		ANGULAR +/- 1°	
AS1074 - (NB) NOMINAL BORE PIPE		HOLE CRS +/- 0.5	
AS1442/2EN - 14A (HB) HOLLOW BAR		FINISH	
MACHINING		MAX. MIN.	
BY DATE		-	
DESCRIPTION OF CHANGE		-	
MAX. MIN.		-	



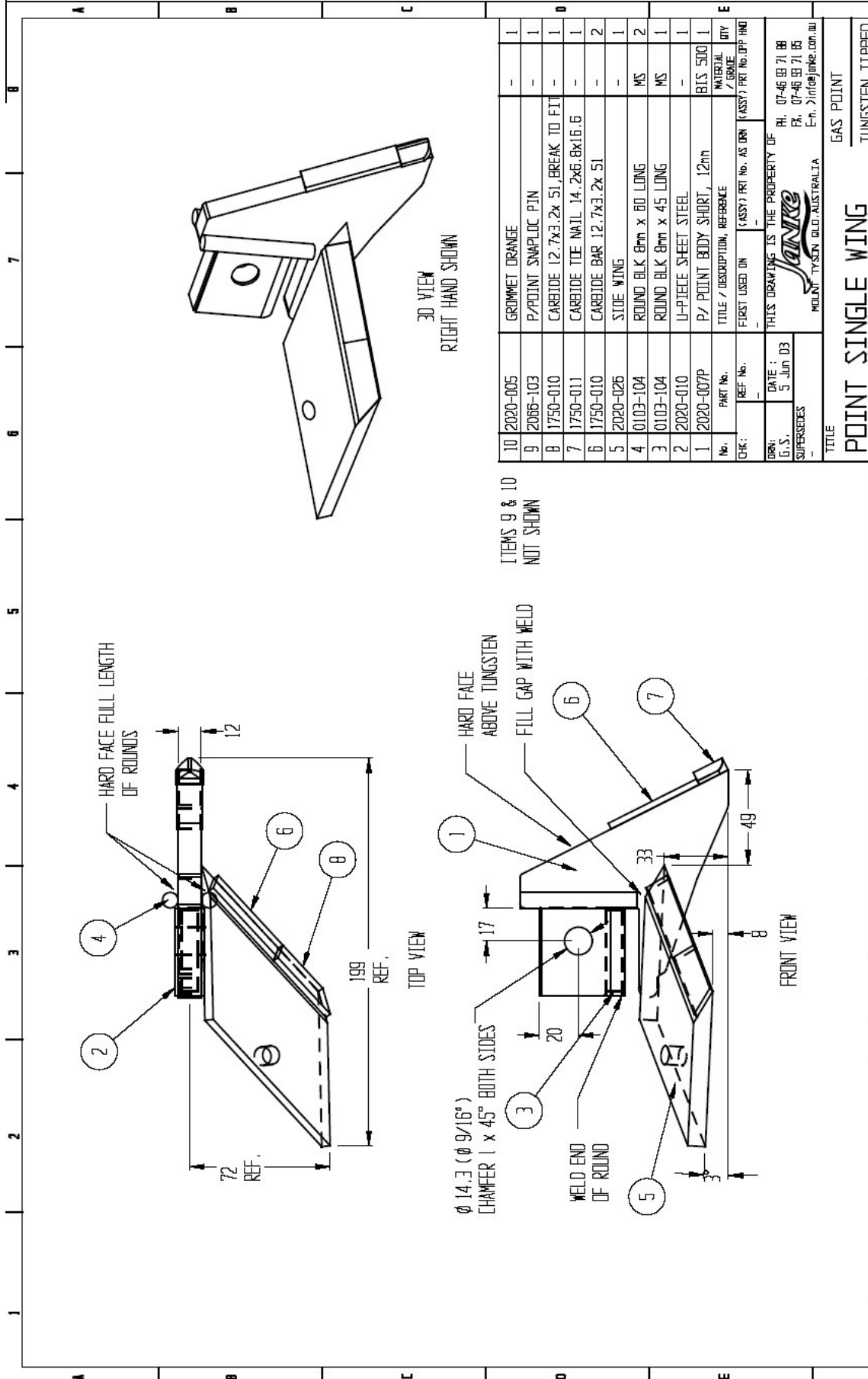
DUNN PRT. No.		2020 - 005		SUPERSEDES SUPERSEDED BY		REV.	
TITLE		ORANGE POLYURETHANE		FIRST USED ON		(ASST) PART No. OF P/HD	
DATE		9 Feb 99		SCALE		SIZE	
M.H.		JANKE		NON STANDARD		A4	
JOB No.		2020 - 001		TYPE		MATERIAL	
CLIENT		JANKE POINT TAYSON BLD. AUSTRALIA		DESCRIPTION		QTY	
APPROVED		[Signature]		TITLE / DESCRIPTION		85/90 1	
SHEET		1 OF 1		CAST POLYURETHANE (ORANGE)			

**HARDNESS 85 - 90
SHORE DURO A**

DUNN PRT. No.		2020 - 005	
DIMENSIONS CHANGED		SS 23/8/04	
DESCRIPTION		BY DATE	

ELEVATION

UNLESS OTHERWISE SPECIFIED TOLERANCES		UNLESS OTHERWISE SPECIFIED MATERIAL - STEEL TO:	
ANGULAR +/- 1°		AS3678/250 - (MS) PLATE/BAR/Etc	
MACHINING DIM. +/- 0.05		AS1074 - (NB) NOMINAL BORE PIPE	
HOLE CRS +/- 0.5		AS1442/EN - 144 (HB) HOLLOW BAR	
ANGULAR +/- 0.05 FINISH 6.4UM		REV. ZONE	
HOLE CRS +/- 0.5		A	

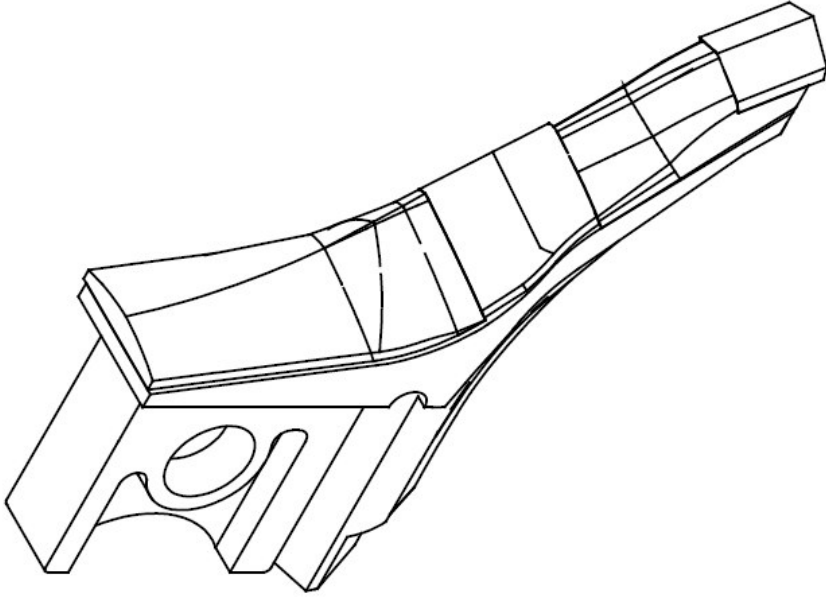



REV.	ZONE	DESCRIPTION OF CHANGE	BY	DATE
-	-	MAX.	-	-
-	-	MIN.	-	-

TOLERANCES UNLESS SPECIFIED		FABRICATION	
MACHINING:	DIM.	ANGULAR	HOLE CRS
±0.05	±0.05	±1°	±0.5
FINISH	6.4UM		

UNLESS SPECIFIED MATERIAL - STEEL TO:	
A5367B/250 - (MS) PLATE/BAR/ETC	
A51163/350/C350 - RH/SHS	
A51074 - (MS) NOMINAL BORE PIPE	
A51442/2EN - (4A) (HB) HOLLOW BAR	

REV. No.	2020-005	GRIMMET ORANGE	-	1
P/POINT	2086-103	P/POINT SNAPLOC PIN	-	1
CARBIDE	1750-010	CARBIDE 12.7x3.2x 51.BREAK TO FIT	-	1
CARBIDE TEE NAIL	1750-011	CARBIDE TEE NAIL 14.2x6.8x16.6	-	1
CARBIDE BAR	1750-010	CARBIDE BAR 12.7x3.2x 51	-	2
STOE WING	2020-026	STOE WING	-	1
ROUND BLK 8mm x 60 LONG	0103-104	ROUND BLK 8mm x 60 LONG	MS	2
ROUND BLK 8mm x 45 LONG	0103-104	ROUND BLK 8mm x 45 LONG	MS	1
U-PIECE SHEET STEEL	2020-010	U-PIECE SHEET STEEL	-	1
P/ POINT BODY SHORT, 12mm	2020-007P	P/ POINT BODY SHORT, 12mm	BIS 510	1
TITLE / DESCRIPTION, REFERENCE			MATERIAL / QUOTE	QTY
CHK:	REF. No.	(ASSY) REF. No. AS ORN	(ASSY) PRT No. (PP. IND)	
DRN:	DATE:	THIS DRAWING IS THE PROPERTY OF		
G.S.	5 Jun 03	PH. 07-46 91 71 88		
SUPERSEDES		PX. 07-46 91 71 85		
		E-m. >info@jynke.com.au		
		MOLKAT TYSON QLD, AUSTRALIA		
TITLE				
POINT SINGLE WING				
GAS POINT				
TUNGSTEN TIPPED				
REV. No.	2020 H 022			SIZE
APPROVED:	1			A 4L
	SCALE:	MIN. STANDARD	TYPE	REV.



No. -		PART No. -		TITLE / DESCRIPTION, REFERENCE -		MATERIAL / GRADE -		QTY -	
CHK: -		REF. No. -		FIRST USED ON -		CLASSY PRT No. AS DRN -		CLASSY PRT No. (APP. IND) -	
DRN: -		DATE: -		THIS DRAWING IS THE PROPERTY OF -		PH. 07-46 89 71 88		FX. 07-46 89 71 85	
SUPERSEDES -				 MOUNT TYSON QLD, AUSTRALIA E-mail: jainke@jainke.com.au					
TITLE: PLANTING POINT									
PRT No. 2020-030									
APPROVED: _____									
SCALE: 1:1 - NON STANDARD									
TYPE: _____									
REV. _____									

UNLESS SPECIFIED		UNLESS SPECIFIED		UNLESS SPECIFIED	
MATERIAL - STEEL TD:		MATERIAL - STEEL TD:		MATERIAL - STEEL TD:	
AS3678/250 - (MS) PLATE/BAR/ETC		AS3678/250 - (MS) PLATE/BAR/ETC		AS3678/250 - (MS) PLATE/BAR/ETC	
AS1163/350/C350 - RHS/SHS		AS1163/350/C350 - RHS/SHS		AS1163/350/C350 - RHS/SHS	
AS1074 - (NB) NOMINAL BORE PIPE		AS1074 - (NB) NOMINAL BORE PIPE		AS1074 - (NB) NOMINAL BORE PIPE	
AS1442/EN - 14A (HB) HOLLOW BAR		AS1442/EN - 14A (HB) HOLLOW BAR		AS1442/EN - 14A (HB) HOLLOW BAR	

TOLERANCES UNLESS SPECIFIED		TOLERANCES UNLESS SPECIFIED		TOLERANCES UNLESS SPECIFIED	
MACHINING		MACHINING		MACHINING	
DIM. +/- 0.05		DIM. +/- 0.05		DIM. +/- 0.05	
ANGULAR +/- 0.05°		ANGULAR +/- 0.05°		ANGULAR +/- 0.05°	
FINISH 6.4UM		FINISH 6.4UM		FINISH 6.4UM	

DESCRIPTION OF CHANGE		DESCRIPTION OF CHANGE		DESCRIPTION OF CHANGE	
MAX. -		MAX. -		MAX. -	
MIN. -		MIN. -		MIN. -	

REV. ZONE		DESCRIPTION OF CHANGE		BY		DATE	
-		-		-		-	

REV. ZONE		DESCRIPTION OF CHANGE		BY		DATE	
-		-		-		-	

CADKEY
PRT. No. **2020 - 034**

SHEET U-PIECE

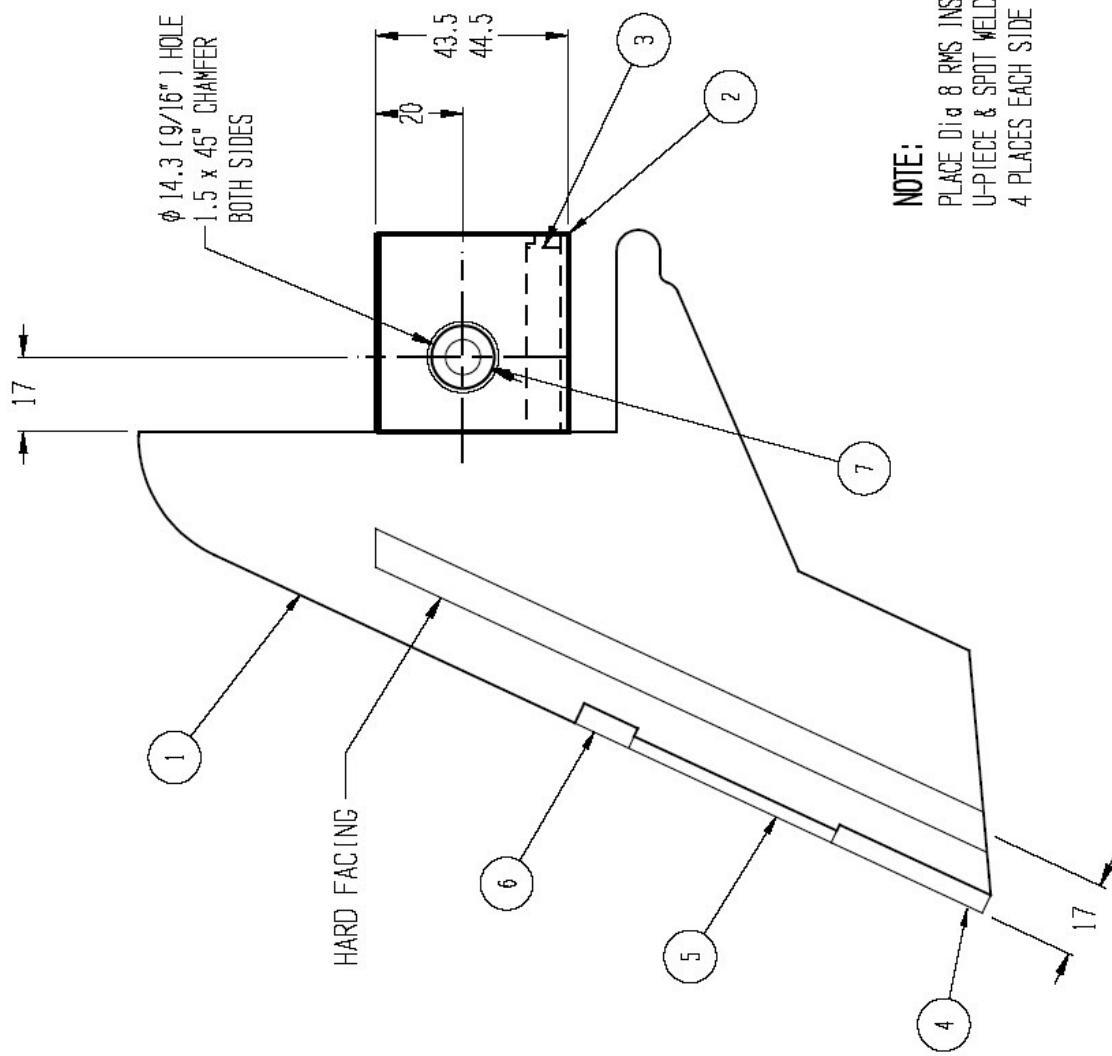
TITLE
PLANTING POINT
DEEP PROFILE B3SALLOY

DIRN.: DATE: 11 May 01
FIRST USED ON (ASSY) PART No. AS.034
JOB No. REF. No.
CLIENT CRK:

THIS DRAWING IS THE PROPERTY OF
JANKE
MOUNT TYSON QLD AUSTRALIA

SCALE: NON STANDARD TYPE SIZE A4

No.	PART No.	TITLE / DESCRIPTION	MATERIAL / GRADE	QTY
1	2020 S 034	PLANTING POINT - 12mm PLATE	Bis 500	1
2	2020 - 010	U - PIECE	-	1
3	-	Dia 8 RMS x 42 Long	-	1
4	1750 - 007	12.7 x 4.5 x 38.1 Tungsten	-	1
5	1750 - 009	12.7 x 3 x 50.8 Tungsten	-	1
6	1750 - 004	12.7 x 5 x 12.7 Tungsten	-	1
7	2020 - 006	GROMMET - BLACK	-	1



NOTE:
PLACE Dia 8 RMS INSIDE
U-PIECE & SPOT WELD AT
4 PLACES EACH SIDE

CHECK WITH GAUGE

CADKEY
PRT. No. **2020 - 034**

REV.	DATE	DESCRIPTION	BY	DATE
-	-	-	-	-
-	-	-	-	-

UNLESS OTHERWISE SPECIFIED TOLERANCES		UNLESS OTHERWISE SPECIFIED MATERIAL - STEEL TO:	
FABRICATION	ANGULAR	AS3678/250 - (MS) PLATE/BAR/Etc	AS1074 - (NB) NOMINAL BORE PIPE
DIM.	HOLE CRS	AS1163/350/C350 - RHS/SHS	AS1442/EN - 144 (HB) HOLLOW BAR
	ANGULAR		
	MACHINING		
	DIM.	+/- 0.05 FINISH	
		+/- 0.1°	
		+/- 0.5	
		+/- 0.05 FINISH	
		6.4µM	

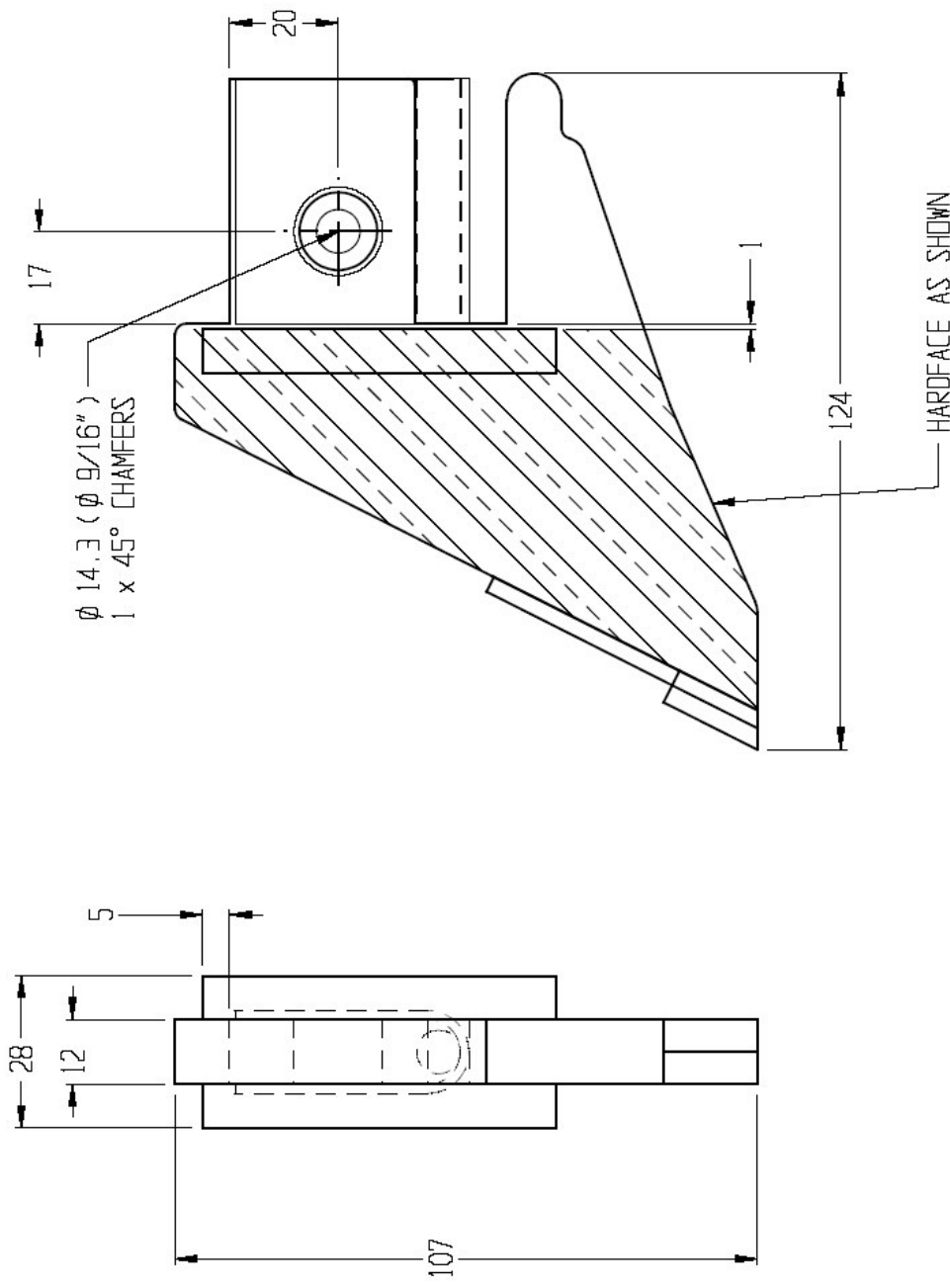
ORDER NO. **2020 - 061** REV. 8
 EXCHANGES APPROVED BY

TITLE **POINT PROFILED SHORT** OLD SHAPE
 USED FOR KING POINT

DATE: 14 DEC 02
 DRAWN BY: J. D. C. (JDC)

THIS DRAWING IS THE PROPERTY OF
JANKE
 PATENT TRADE MARK AUSTRALIA

No.	Part No.	Material / Description	Quantity	Unit
1	0121-512	PLATE 12mm, 117 x 107	1	PIECE
2	2020-010	U. PIECE SHEET METAL	1	PIECE
3	0103-104	ROUND BTR. 45 LONG	1	MS
4	2020-006	BROWNET BLACK	1	PIECE
5	0103-104	ROUND BTR. 65 LONG	2	MS
6	1750-008	TUNGSTEN 12.7 x 3 x 30.1	1	PIECE
7	1750-011	TUNGSTEN 14 x 6.5 x 16	1	PIECE



ORDER NO. **2020 - 061**

UNLESS OTHERWISE SPECIFIED TO DIMENSIONS	UNLESS OTHERWISE SPECIFIED MATERIAL - STEEL TO:	UNLESS OTHERWISE SPECIFIED HARD FACING (HARD)
FABRICATION: 1/2" FILE OR 1/4" MACHINING FINISH	AS 1578/550/CS30 - R515/515	AS 1442/EN - 1.4018/1.4018/1.4018/EN
DR: 1/2" FILE OR 1/4" MACHINING FINISH	AS 1578/550/CS30 - R515/515	AS 1442/EN - 1.4018/1.4018/1.4018/EN
DATE: 14 DEC 02	DATE: 14 DEC 02	DATE: 14 DEC 02
BY: JDC	BY: JDC	BY: JDC
DESCRIPTION: POINT PROFILED SHORT	DESCRIPTION: POINT PROFILED SHORT	DESCRIPTION: POINT PROFILED SHORT

