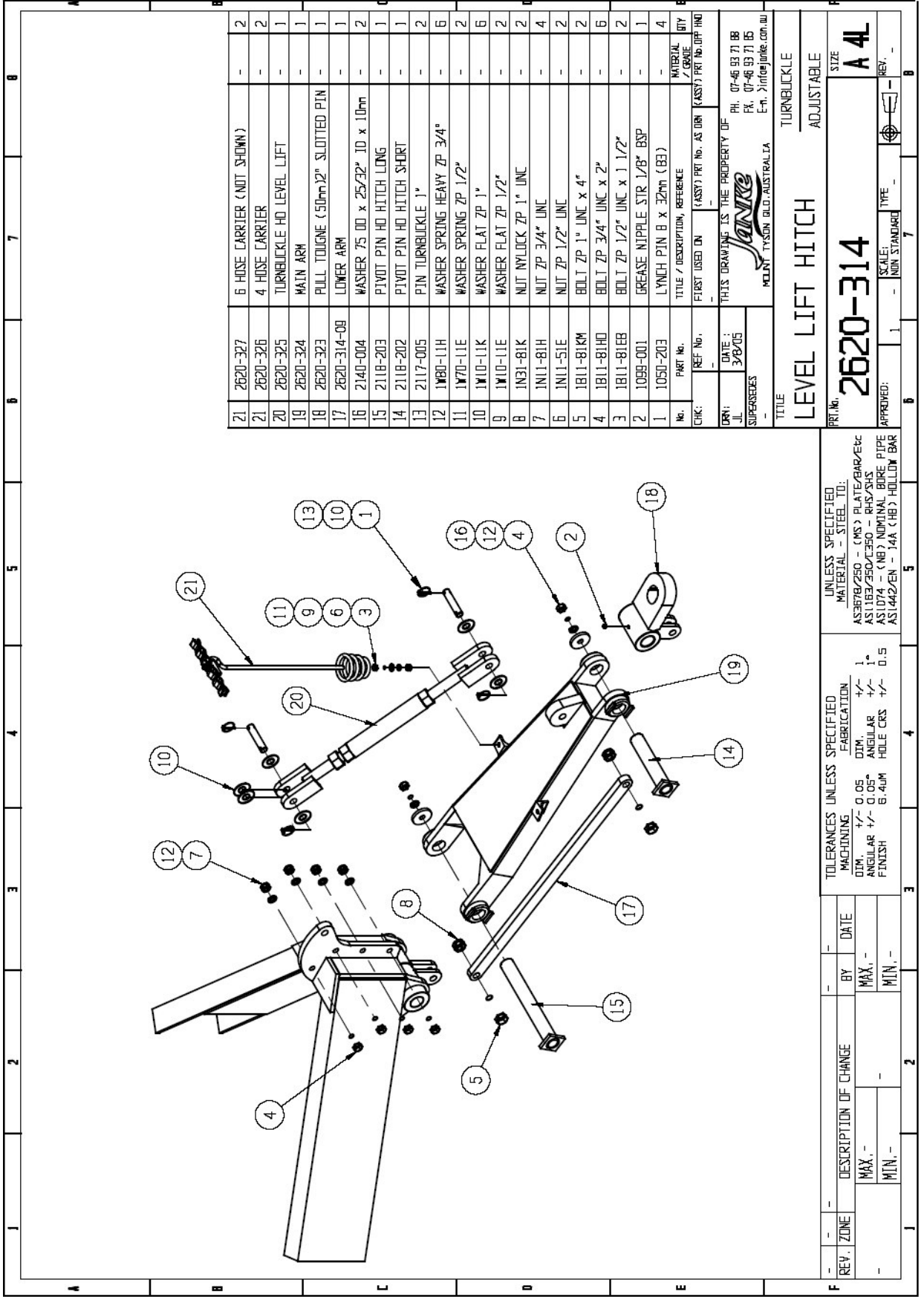




Section 17

Pulls & Hitches

¹ Janke (Australia) reserves the right to alter the pricing of any of its products without notice.



21	2620-327	6 HOSE CARRIER (NOT SHOWN)	-	2
20	2620-328	4 HOSE CARRIER	-	2
19	2620-325	TURNBUCKLE HO. LEVEL LIFT	-	1
18	2620-324	MAIN ARM	-	1
17	2620-323	PULL TOUNGE (50mm) 2" SLOTTED PIN	-	1
16	2620-314-09	LOWER ARM	-	1
15	2140-004	WASHER 75 00 x 25/32" ID x 10mm	-	2
14	2118-203	PIVOT PIN HO HITCH LONG	-	1
13	2117-005	PIVOT PIN HO HITCH SHORT	-	1
12	1W80-11H	PIN TURNBUCKLE 1"	-	2
11	1W70-11E	WASHER SPRING HEAVY ZP 3/4"	-	6
10	1W10-11K	WASHER SPRING ZP 1/2"	-	2
9	1W10-11E	WASHER FLAT ZP 1"	-	6
8	1N31-81K	WASHER FLAT ZP 1/2"	-	2
7	1N11-81H	NUT NYLOCK ZP 1" UNC	-	2
6	1N11-51E	NUT ZP 3/4" UNC	-	4
5	1B11-81KM	NUT ZP 1/2" UNC	-	2
4	1B11-81HD	BOLT ZP 1" UNC x 4"	-	2
3	1B11-81EB	BOLT ZP 3/4" UNC x 2"	-	6
2	1099-001	BOLT ZP 1/2" UNC x 1 1/2"	-	2
1	1050-203	GREASE NIPPLE STR 1/8" BSP	-	1
		LYNCH PIN 8 x 32mm (B3)	-	4
No.	PART No.	TITLE / DESCRIPTION, REFERENCE	MATERIAL	QTY
CHK:	REF. No.	FIRST USED ON (ASSY) PART No. AS ORN (ASSY) PART No. UPT. HND		
DRN:	DATE:	THIS DRAWING IS THE PROPERTY OF		
J.L.	3/9/05	JANKE		
SUPERSEDES		PH. 07-46 83 71 88 FK. 07-46 83 71 85 E-m. Sales@janke.com.au MELBURN TYSON BLDG AUSTRALIA		

TITLE: LEVEL LIFT HITCH

TURNBUCKLE ADJUSTABLE

PR. No. 2620-314

SIZE A 4L

APPROVED: 1 - NON STANDARD TYPE - REV. -

SCALE: 1:1

UNLESS SPECIFIED MATERIAL - STEEL TD:	AS3278/250 - CMS	PLATE/BAR/etc
	AS1183/250/350 - RHS/SAS	
	AS1074 - (NB) NOMINAL BORE PIPE	
	AS1442/FEN - 14A (HB) HOLLOW BAR	
TOLERANCES UNLESS SPECIFIED		
MACHINING	0.05	
DTM	0.05	
ANGULAR	± 1°	
HOLE CRS	± 0.1	
FINISH	6-4UM	
DESCRIPTION OF CHANGE	BY	DATE
MAX. -		
MIN. -		

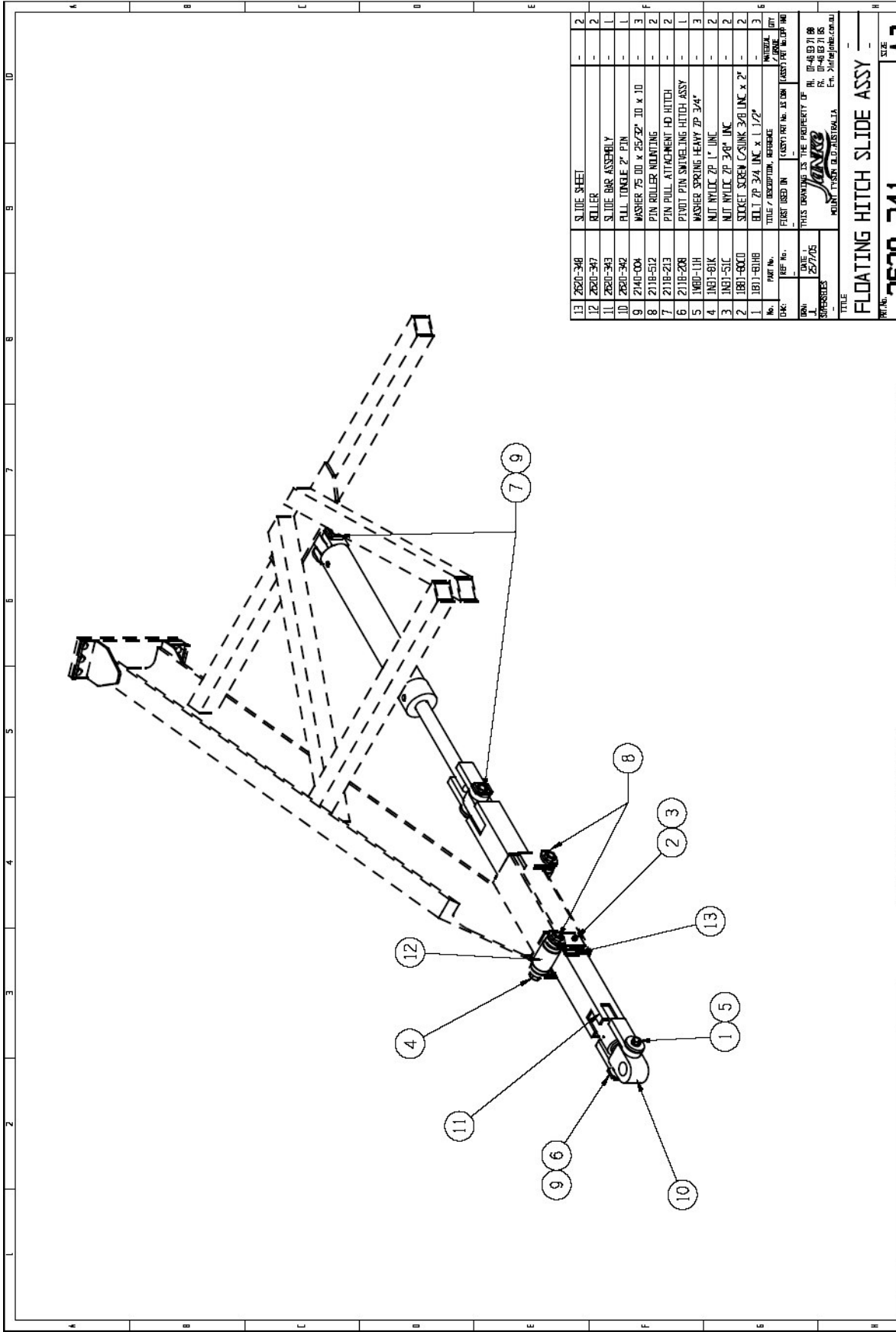


Price List for Level Lift Hitch
2620-314

Individual Components:

No.	Part No.	Description	Qty.
1	1050-203	LYNCH PIN 8 X 32MM (B3)	4
2	1099-001	GREASE NIPPLE STR 1/8"BSP	1
3	1B11-81EB	BOLT ZP 1/2 UNC X 1 1/2"	2
4	1B11-81HD	BOLT ZP 3/4 UNC X 2"	6
5	1B11-81KM	BOLT ZP 1 UNC X 4"	2
6	1N11-51E	NUT ZP 1/2" UNC	2
7	1N11-81H	NUT ZP 3/4"UNC	4
8	1N31-81K	NUT NYLOC ZP 1" UNC	2
9	1W10-11E	WASHER FLAT ZP 1/2"	2
10	1W10-11K	WASHER FLAT ZP 1"	6
11	1W70-11E	WASHER SPRING MED ZP 1/2"	2
12	1W80-11H	WASHER SPRING HEAVY ZP 3/4"	6
13	2117-005	PIN TURNBUCKLE LEVEL LIFT 1"	2
14	2118-202	PIVOT PIN HD HITCH SHORT	2
15	2118-203	PIVOT PIN HD HITCH LONG	1
16	2140-004	WASHER 75 O/D X 25/32" ID, 10 THICK	2
17	2620-314-09	LOWER ARM, HD LEVEL LIFT PULL	1
18	2620-323	PULL TONGUE (50mm) 2" SLOTTED PIN LEVEL LIFT	1
19	2620-324	MAIN ARM LEVEL LIFT T/BUCKLE ADJ HD	1
20	2620-325	TURNBUCKLE, HD HITCH	1
21	2620-326	4 HOSE CARRIER	2
21	2620-327	6 HOSE CARRIER (NOT SHOWN)	2

² Janke (Australia) reserves the right to alter the pricing on any of its products without notice.



13	2620-348	SLIDE SHEET	-	2
12	2620-347	ROLLER	-	2
11	2620-343	SLIDE BAR ASSEMBLY	-	1
10	2620-342	PULL TONGUE 2" PIN	-	1
9	2140-004	WASHER 75.00 x 25/32" 10 x 10	-	3
8	2118-512	PIN ROLLER MOUNTING	-	2
7	2118-213	PIN PULL ATTACHMENT HD HITCH	-	2
6	2118-208	PIVOT PIN SWIVELING HITCH ASSY	-	1
5	1100-UH	WASHER SPRING HEAVY 2" 3/4"	-	3
4	1181-81K	NUT W/LOC 2" 1" 1/2"	-	2
3	1181-51C	NUT W/LOC 2" 3/4" 1/2"	-	2
2	1181-80C0	WASHER SPRING HEAVY 2" 3/4" 1/2"	-	2
1	1181-81HH	BELT 2" 3/4" 1/2" x 1 1/2"	-	3
PART No.		TITLE / DESCRIPTION, REFERENCE	MATERIAL	QTY
QTY		QTY USED IN	CUSTOMER NO. AS SHOWN	CLASSIFIED BY
DATE		DATE	BY	BY
25/7/05		25/7/05	00-46-01-08	00-46-01-08
SUPERSEDES		THIS DRAWING IS THE PROPERTY OF JIMBO		
		REVISIONS		
		REV. 1		

TITLE: **FLOATING HITCH SLIDE ASSY**
 PART No.: **2620-341**
 SIZE: **A3**
 APPROVED: **1** BY: **1** TYPE: **1**
 JIMBO
 4000 TUCKER RD. DUNDAS QLD 4282
 Ph: 07-4688 7188
 Fax: 07-4688 7185
 E-mail: info@jimbo.com.au

UNLESS OTHERWISE SPECIFIED TOLERANCES	UNLESS OTHERWISE SPECIFIED MATERIAL - STEEL TO:
FABRICATION DIM. ± 0.5	AS 1174 - (MS) PLATE/SP/SH
ANGULAR HOLE CS	AS 1174 - (MS) PLATE/SP/SH
MACHINING DIM. ± 0.05	AS 1174 - (MS) PLATE/SP/SH
FINISH DIM. ± 0.05	AS 1174 - (MS) PLATE/SP/SH
DESCRIPTION	DESCRIPTION
BY	BY
DATE	DATE



Price List for Floating Hitch Slide Assy.
2620-341

Individual Components:

No.	Part No.	Description	Qty.
1	1B11-81HB	BOLT ZP 3/4 UNC X 1 1/2"	3
2	1BB1-80CD	SOCKET SCREW C/SUNK 3/8 UNC X 2"	2
3	1N31-51C	NUT NYLOC ZP 3/8"UNC	2
4	1N31-81K	NUT NYLOC ZP 1" UNC	2
5	1W80-11H	WASHER SPRING HEAVY ZP 3/4"	3
6	2118-208	PIN SWIVELING HITCH 1.5" x 144 FLOATING HITCH	1
7	2118-213	PIN PULL CYLINDER FH 1.5" x 104mm	2
8	2118-512	PIN ROLLER MOUNTING 1" X 225mm CHROME	2
9	2140-004	WASHER 75 O/D X 25/32" ID, 10 THICK	3
10	2620-342	PULL TONGUE 2" PIN, FLOATING HITCH	1
11	2620-343	SLIDE BAR ASSY	1
12	2620-347	ROLLER FLOATING HITCH	2
13	2620-348	SLIDE SHEET HD POLYTHN 503 x 101 x 6.35	2

³ Janke (Australia) reserves the right to alter the pricing of any of its products without notice.

10

9

8

7

6

5

4

3

2

1

0

A

B

C

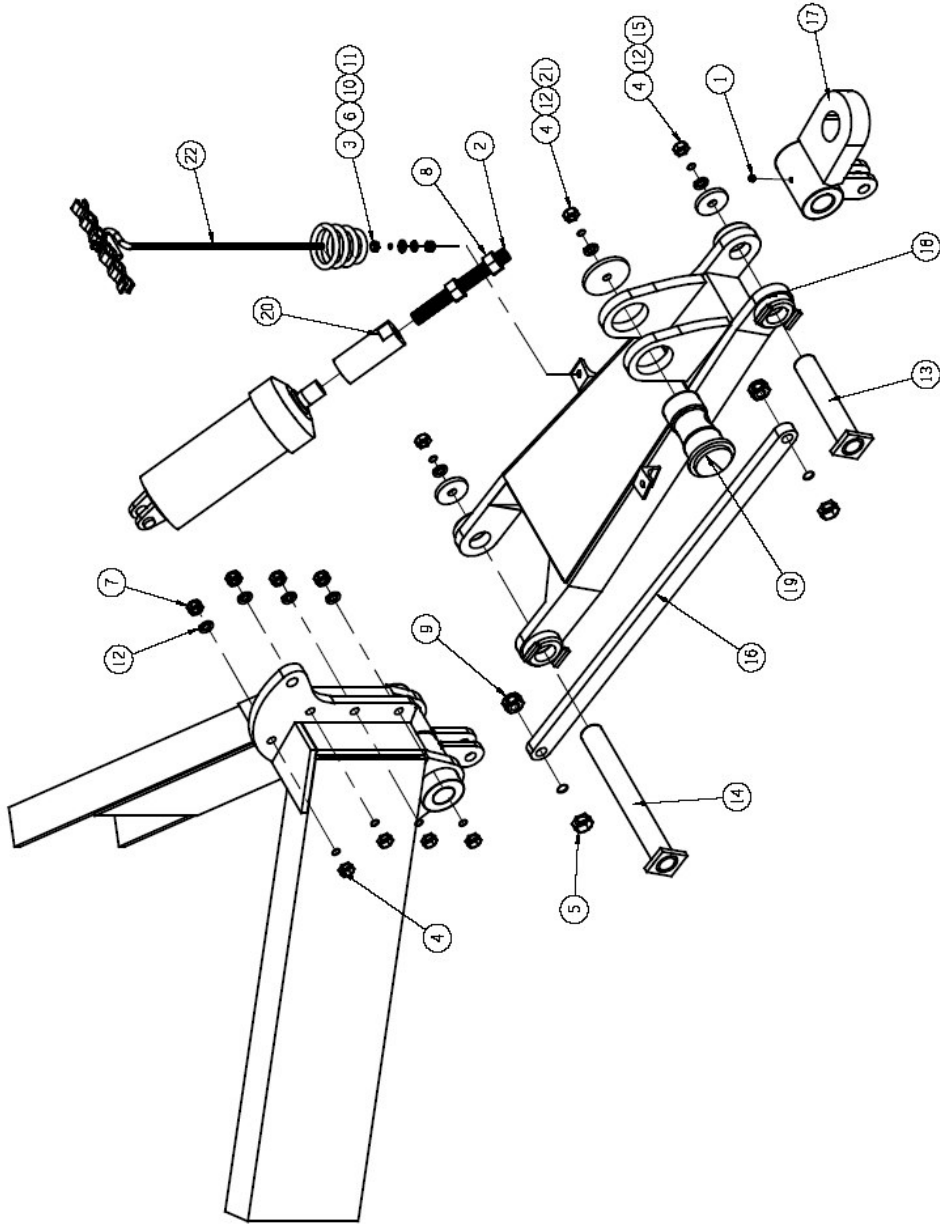
D


E

F

G

H



22	2620-327	6 HOSE CARRIER (NOT SHOWN)	-	L
21	2620-326	4 HOSE CARRIER	-	L
20	2620-325	RETAINING WASHER	-	L
19	2620-324	THREADED COLLAR	-	L
18	2620-323	PIVOT SHAFT	-	L
17	2620-322	MAIN ARM LEVEL LIFT	-	L
16	2620-314-09	PULL LINGUE (50mm) 2" SLOTTED PIN	-	L
15	2141-004	LOWER ARM	-	L
14	2118-203	WASHER 75.00 X 25/32" ID X .10mm	-	2
13	2118-202	PIVOT PIN HD HITCH LONG	-	L
12	1W07-17H	WASHER SPRING HEAVY ZP 3/4"	-	7
11	1W07-17E	WASHER SPRING MED ZP 1/2"	-	2
10	1W07-17E	WASHER FLAT ZP 1/2"	-	2
9	1N11-81K	NUT W/LOCK ZP 1" UNC	-	2
8	1N12-81H	NUT 1 1/4" UNC	-	2
7	1N11-81H	NUT 3/4" UNC	-	4
6	1N11-81E	NUT 1/2" UNC	-	2
5	1B11-81M	BELT ZP 1" UNC X 4"	-	2
4	1B11-81H	BELT ZP 3/4" UNC X 2"	-	7
3	1B11-81EB	BELT 1/2" UNC X 1 1/2"	-	2
2	1B12-50M	THREADED ROD BLK 1 1/4" UNC X 20"	-	L
1	1095-001	GREASE NIPPLE STR 1/4" BSP	-	L
PART No.		TITLE / DESCRIPTION / REFERENCE	QUANTITY	
QTY	REF No.	QTY USED ON	CASHT REF No.	AS BOM
<p>THIS DRAWING IS THE PROPERTY OF  SINTEC (AUSTRALIA) PTY LTD Ph. 07-48 91 71 88 Fax. 07-48 91 71 85 E-mail. info@sintec.com.au</p>				

TITLE
LEVEL LIFT HITCH

REV. No. -

SCALE: - NOT STANDARD

SIZE
A3

REV.	ZONE	DESCRIPTION	BY	DATE
-	-	-	-	-
-	-	-	-	-
-	-	-	-	-

UNLESS OTHERWISE SPECIFIED TOLERANCES

FABRICATION	ANGULAR	1/4" - 1"	ANGULAR	1/4" - 0.05"
DIM.	HOLE DR	1/2" - 0.5	ANGULAR	AS NOTED
			FINISH	AS NOTED
			FINISH	AS NOTED

UNLESS OTHERWISE SPECIFIED MATERIAL - STEEL: 1018

AS 1074 - (H) MATERIAL BEYOND 1018

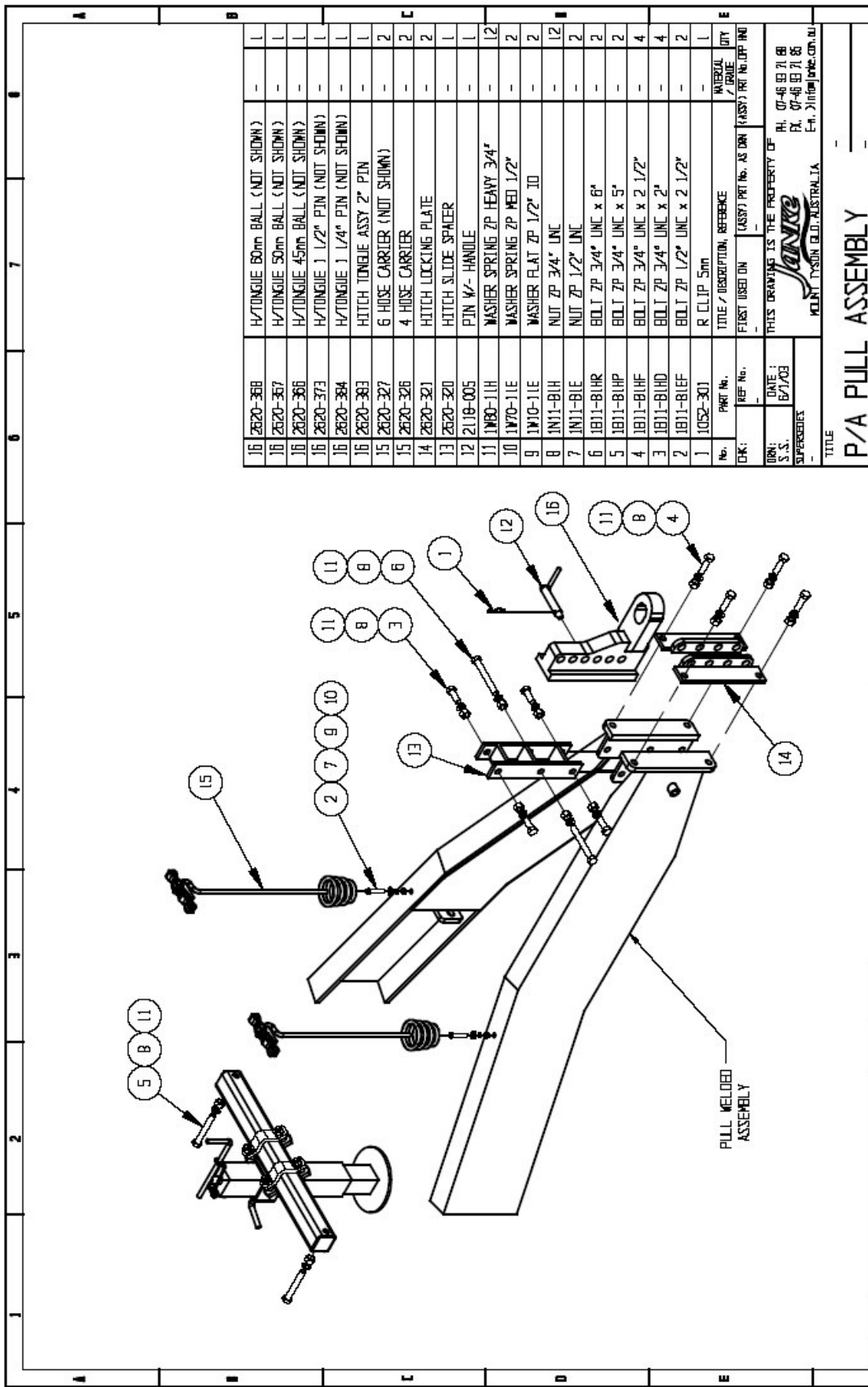
AS 1424/EN - 144 (H) HOLLOW BAR



Price List for Level Lift Hitch

Individual Components:

No.	Part No.	Description	Qty.
1	1099-001	GREASE NIPPLE STR 1/8"BSP	1
2	1BL2-50M	THREADED ROD BLK 1 1/4" UNF x 250	1
3	1B11-81EB	BOLT 1/2" UNC x 1 1/2"	2
4	1B11-81HD	BOLT ZP 3/4 UNC X 2"	7
5	1B11-81KM	BOLT ZP 1 UNC X 4"	2
6	1N11-51E	NUT 1/2" UNC	2
7	1N11-81H	NUT ZP 3/4"UNC	4
8	1N12-81M	NUT ZP 1 1/4"UNF	2
9	1N31-81K	NUT NYLOC ZP 1" UNC	2
10	1W10-11E	WASHER FLAT ZP 1/2"	2
11	1W70-11E	WASHER SPRING MED ZP 1/2"	2
12	1W80-11H	WASHER SPRING HEAVY ZP 3/4"	7
13	2118-202	PIVOT PIN HD HITCH SHORT	1
14	2118-203	PIVOT PIN HD HITCH LONG	1
15	2140-004	WASHER 75 O/D X 25/32" ID, 10	2
16	2620-314-09	LOWER ARM, HD LEVEL LIFT PULL	1
17	2620-323	PULL TONGUE (50mm) 2" SLOTTED PIN LEVEL LIFT	1
18	2620-332	MAIN ARM LEVEL LIFT CYLINDER ADJ HD	1
19	2620-333	PIVOT SHAFT RAM ADJUSTER	1
20	2620-334	THREADED COLLAR RAM ADJUSTER	1
21	2620-335	RETAINING WASHER RAM ADJUSTER	1
22	2620-326	4 HOSE CARRIER	1
22	2620-327	6 NOSE CARRIER (NOT SHOWN)	1



REV.	ZONE	DESCRIPTION OF CHANGE	BY	DATE	MAX.	MIN.
-	-	-	-	-	-	-

No.	PART No.	TITLE / DESCRIPTION, REFERENCE	QUANTITY
16	2620-36B	H/TONGUE 60mm BALL (NOT SHOWN)	-
16	2620-367	H/TONGUE 50mm BALL (NOT SHOWN)	-
16	2620-366	H/TONGUE 45mm BALL (NOT SHOWN)	-
16	2620-373	H/TONGUE 1 1/2" PIN (NOT SHOWN)	-
16	2620-384	H/TONGUE 1 1/4" PIN (NOT SHOWN)	-
16	2620-383	HITCH TONGUE ASSY 2" PIN	-
15	2620-327	6 HOSE CARRIER (NOT SHOWN)	-
15	2620-326	4 HOSE CARRIER	-
14	2620-321	HITCH LOCKING PLATE	-
13	2620-320	HITCH SLIDE SPACER	-
12	2119-005	PIN 1/2" HANDLE	-
11	1W90-11H	WASHER SPRING ZP HEAVY 3/4"	-
10	1W70-11E	WASHER SPRING ZP MED 1/2"	-
9	1W10-11E	WASHER FLAT ZP 1/2" 10	-
8	1N11-81H	NUT ZP 3/4" UNC	-
7	1N11-81E	NUT ZP 1/2" UNC	-
6	1B11-81HR	BOLT ZP 3/4" UNC x 6"	-
5	1B11-81HP	BOLT ZP 3/4" UNC x 5"	-
4	1B11-81HF	BOLT ZP 3/4" UNC x 2 1/2"	-
3	1B11-81HD	BOLT ZP 3/4" UNC x 2"	-
2	1B11-81EF	BOLT ZP 1/2" UNC x 2 1/2"	-
1	1052-301	R CLIP 5mm	-

CHK:	REF No.	DATE:	BY:
-	-	6/21/03	-

DRN:	S.S.	DATE:	BY:
-	-	6/21/03	-

THIS DRAWING IS THE PROPERTY OF
JANKE
 MOUNT TYSOR QLD, AUSTRALIA
 E-mail: j@janke.com.au

TITLE: **P/A PULL ASSEMBLY**

REV. No. **A 4L**

SIZE: **A 4L**

APPROVED: _____

SCALE: **NON STANDARD**

TYPE: _____

UNLESS SPECIFIED MATERIAL - STEEL TO:
 AS2678/250 - (NS) PLATE, BAR, etc
 AS1163/350/450 - RACKS, S
 AS1074 (M) NOMINAL PIPE, PIPE
 AS1442/EN - 144 (HB) HOLLOW BAR

TOLERANCES UNLESS SPECIFIED FABRICATION
 DIM. ±0.05 DIM. ±0.1
 ANGULAR ±0.05 ANGULAR ±0.5
 FINISH ±0.40M HOLE DR ±0.5



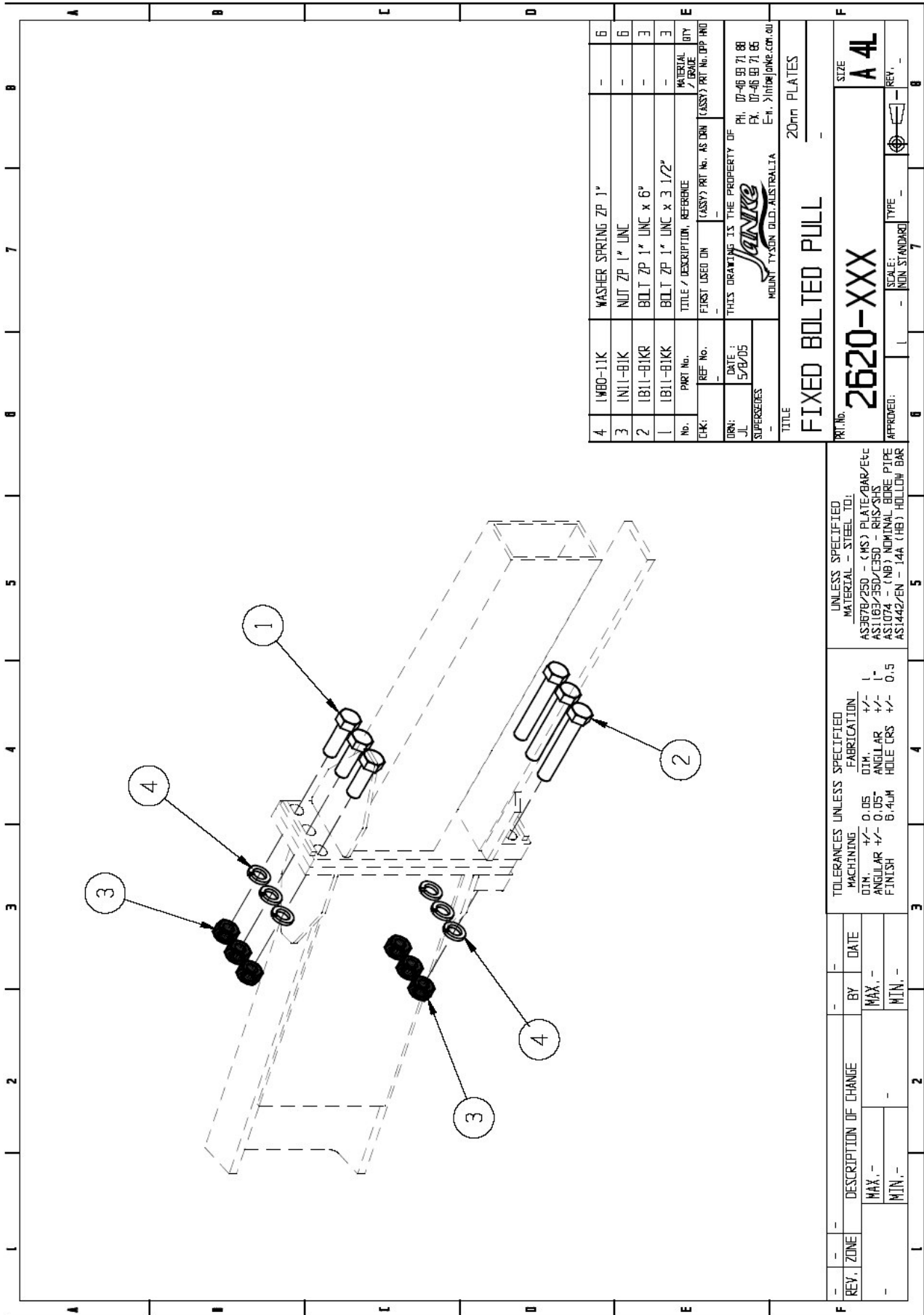
Price List for P/A Pull Assy.

4

Individual Components:

No.	Part No.	Description	Qty.
1	1052-301	R CLIP 5 mm	1
2	1B11-81EF	BOLT ZP 1/2" UNC x 2 1/2"	2
3	1B11-81HD	BOLT ZP 3/4" UNC x 2"	4
4	1B11-81HF	BOLT ZP 3/4" UNC x 2 1/2"	4
5	1B11-81HP	BOLT ZP 3/4" UNC x 5"	2
6	1B11-81HR	BOLT ZP 3/4" UNC x 5"	2
7	1N11-81E	NUT ZP 1/2" UNC	2
8	1N11-81H	NUT ZP 3/4" UNC	12
9	1W10-11E	WASHER FLAT ZP 1/2" ID	2
10	1W70-11E	WASHER SPRING ZP MED 1/2"	2
11	1W80-11H	WASHER SPRING ZP HVY 3/4"	12
12	2118-005	PIN W/- HANDLE	1
13	2620-320	HITCH SLIDE SPACER	1
14	2620-321	HITCH LOCKING PLATE	2
15	2620-326	4 HOSE CARRIER	2
15	2620-327	6 HOSE CARRIER (NOT SHOWN)	2
16	2620-383	HITCH TONGUE ASSY 2" PIN	1
16	2620-384	H/TONGUE 1 1/4" PIN (NOT SHOWN)	1
16	2620-373	H/TONGUE 1 1/2" PIN (NOT SHOWN)	1
16	2620-366	H/TONGUE 45mm BALL (NOT SHOWN)	1
16	2620-367	H/TONGUE 50mm BALL (NOT SHOWN)	1
16	2620-368	H/TONGUE 60mm BALL (NOT SHOWN)	1

⁴ Janke (Australia) reserves the right to alter the pricing on any of its products without notice.



4	1W60-11K	WASHER SPRING ZP 1"	-	6
3	1N11-81K	NUT ZP 1" UNC	-	6
2	1B11-81KR	BOLT ZP 1" UNC x 6"	-	3
1	1B11-81KK	BOLT ZP 1" UNC x 3 1/2"	-	3
No.	PART No.	TITLE / DESCRIPTION, REFERENCE	MATERIAL	QTY
CHK:	REF No.	FIRST USED ON	ASSY'S PART No. AS DWN	ASSY'S PART No. (PP AND)

DWN: THIS DRAWING IS THE PROPERTY OF
 J.L. DATE: 5/8/05
 SUPERSEDES:

TITLE: 20mm PLATES
FIXED BOLTED PULL
 PRT. No. **2620-XXX** SIZE **A 4L**
 APPROVED: SCALE: 1:1 MIN. STANDARD TYPE: - REV: -
 HOUNT, TYSON BLD, AUSTRALIA. E.M. > info@jankc.com.au

UNLESS SPECIFIED
 MATERIAL - STEEL TO:
 AS3078/250 - CMS PLATE/BAR/Etc
 AS1163/350/CE50 - RHS/SHS
 AS1074 - (NB) NOMINAL BORE PIPE
 AS1442/EN - 144 (HB) HOLLOW BAR

TOLERANCES UNLESS SPECIFIED		FABRICATION	
MACHINING	0.05	DIM.	+/-
ANGULAR	+/- 0.05	ANGLE	+/-
FINISH	6-4UM	HOLE CRS	+/- 0.5

REV.	ZONE	DESCRIPTION OF CHANGE	BY	DATE
		MAX. -		
		MIN. -		



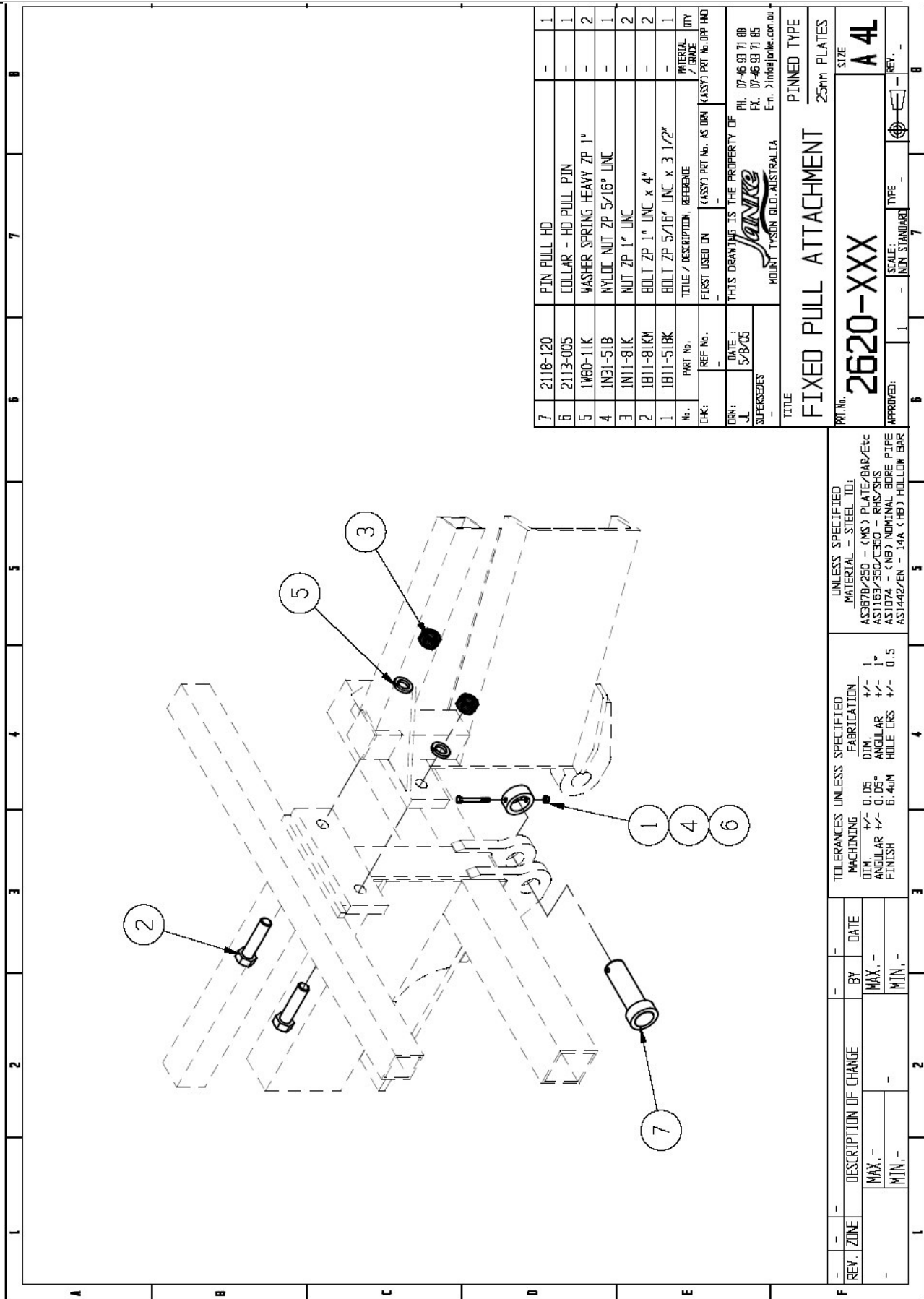
5

Price List for Fixed Bolted Pull **2620-XXX**

Individual Components:

No	Part No.	Description	Qty.
1	1B11-81KH	BOTL ZP 1" UNC x 3"	3
2	1B11-81KR	BOLOT ZP 1" UNC x 6"	3
3	1N11-81K	NUT ZP 1" UNC	6
4	1W80-11K	WASHER SPRING ZP 1"	6

⁵ Janke (Australia) reserves the right to alter the pricing of any of its products without notice.



7	2118-120	PIN PULL ROD	-	1
6	2113-005	COLLAR - HO PULL PIN	-	1
5	1W60-11K	WASHER SPRING HEAVY ZP 1"	-	2
4	1N31-51B	NYLON NUT ZP 5/16" UNC	-	1
3	1N11-81K	NUT ZP 1" UNC	-	2
2	1B11-81KM	BOLT ZP 1" UNC x 4"	-	2
1	1B11-51BK	BOLT ZP 5/16" UNC x 3 1/2"	-	1
No.	PART No.	TITLE / DESCRIPTION, REFERENCE	MATERIAL / GRADE	QTY
CHK:	REF No.	(KASSY) PART No. AS DIB	(KASSY) PART No. DRP TAD	
DRN:	DATE:	THIS DRAWING IS THE PROPERTY OF		
J.	5/8/05	PH. 07-46 93 71 88		
SUPERSEDES		FX. 07-46 93 71 85		
		E-m. > info@jankz.com.au		
		HOUNT TYSON QLD AUSTRALIA		
TITLE				
FIXED PULL ATTACHMENT				
PINNED TYPE				
25mm PLATES				
SIZE				
A 4L				
REV.				
APPROVED:				
1	-	NON STANDARD	-	-
SCALE:				

UNLESS SPECIFIED	MATERIAL - STEEL TO:	AS3678/250 - (MS) PLATE/BAR/EC		
		AS1163/350/CS30 - RHS/SHS		
		AS1074 - (NB) NOMINAL BORE PIPE		
		AS1442/EN - 14A (HB) HOLLOW BAR		
TOLERANCES UNLESS SPECIFIED	FABRICATION	1		
MACHINING	DIM.	+/- 0.05		
ANGULAR	ANGULAR	+/- 1°		
FINISH	HOLE CRS	+/- 0.15		
	6.4UM			
REV.	ZONE	DESCRIPTION OF CHANGE	BY	DATE
		MAX.		
		MIN.		



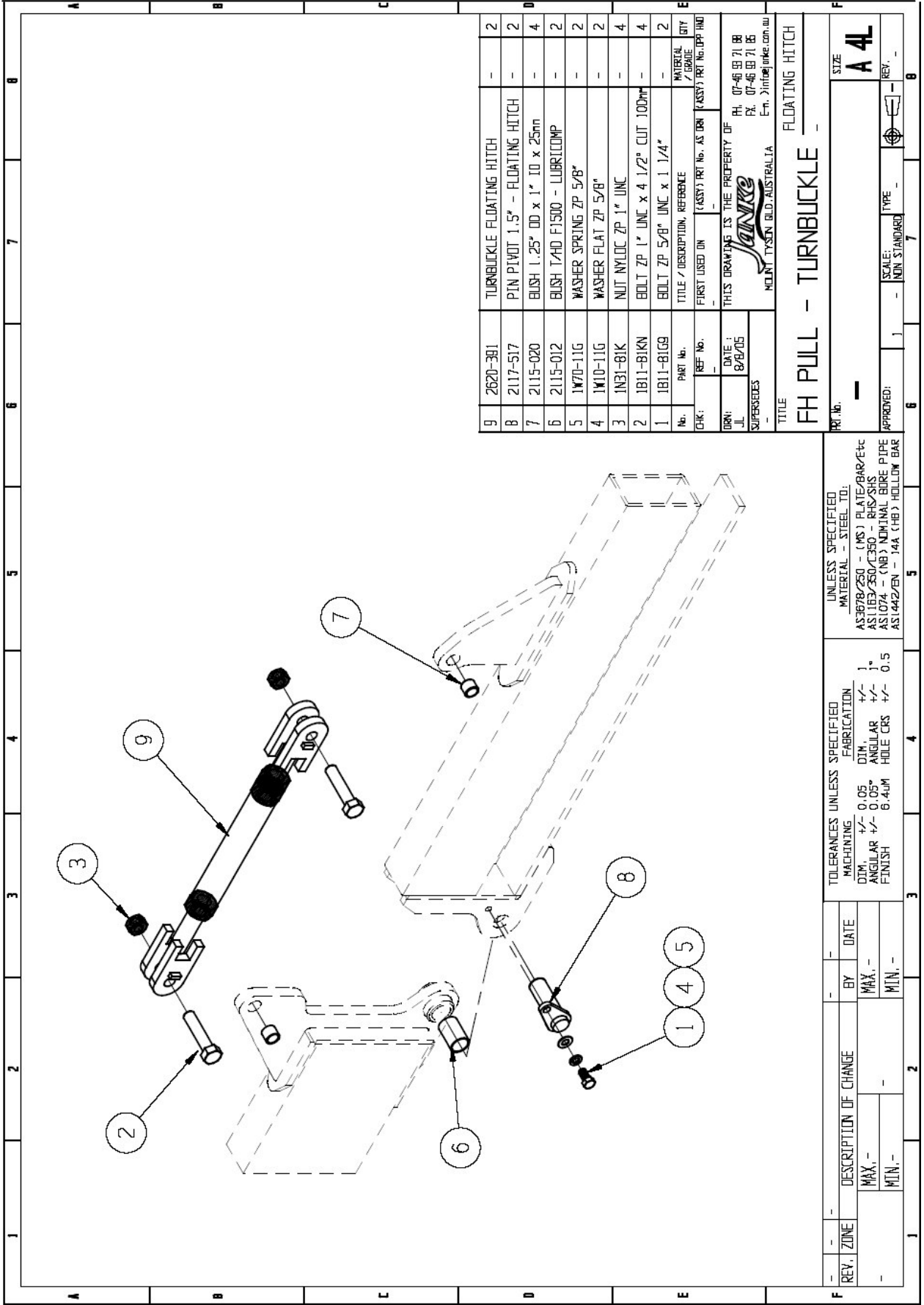
6

Price List for Fixed Pull Attachment **2620-XXX**

Individual Components:

No.	Part No.	Description	Qty.
1	1B11-51BK	BOLT ZP 5/16" UNC x 3 1/2"	1
2	1B11-81KM	BOLT ZP 1" UNC x 4"	2
3	1N11-81K	NUT ZP 1" UNC	2
4	1N31-51B	NYLOC NUT ZP 5/16" UNC	1
5	1W80-11K	WASHER SPRING HVY ZP 1"	2
6	2113-005	COLLAR - HD PULL PIN	1
7	2118-120	PIN PULL HD	1

⁶ Janke (Australia) reserves the right to alter the pricing of any of its products without notice.



9	2620-361	TURNBUCKLE FLOATING HITCH	-	2
8	2117-517	PIN PIVOT 1.5" - FLOATING HITCH	-	2
7	2115-020	BUSH 1.25" OD x 1" ID x 25mm	-	4
6	2115-012	BUSH T40 F1500 - LUBRICOMP	-	2
5	1W70-11G	WASHER SPRING ZP 5/8"	-	2
4	1W10-11G	WASHER FLAT ZP 5/8"	-	2
3	1N31-81K	NUT NYLOC ZP 1" UNC	-	4
2	1B11-81KN	BOLT ZP 1" UNC x 4 1/2" CUT 100mm	-	4
1	1B11-81G9	BOLT ZP 5/8" UNC x 1 1/4"	-	2
No.	PART No.	TITLE / DESCRIPTION, REFERENCE	MATERIAL / GRADE	QTY
CHK:	REF No.	FIRST USED ON	ASSY / PART No. AS DRN	ASSY / PART No. DPP / HD
DRN:	DATE:	THIS DRAWING IS THE PROPERTY OF		
JL:	8/8/05	 HOLTY TYSON BLD. AUSTRALIA Ph. 07-46 89 71 88 Fx. 07-46 89 71 86 E.m. jinfo@jokes.com.au		
SUPERSEDES				

TITLE
FH PULL - TURNBUCKLE -
 FLOATING HITCH

REV. ZONE - - - - -

BY - - - - - DATE - - - - -

DESCRIPTION OF CHANGE	MAX.	MIN.
-	-	-

UNLESS SPECIFIED MATERIAL - STEEL TO:
 AS1378/250 - (MS) PLATE/BAR/etc
 AS1553/250/350 - BUSHES
 AS1024 - (NB) TUBULAR BORE PIPE
 AS1442/EN - 304 (FB) HOLLOW BAR

TOLERANCES UNLESS SPECIFIED	FABRICATION
MACHINING	DIM.
DIM.	ANGULAR
FINISH	HOLE CRS
±0.05	±0.5
±0.05	±0.5
6.4UM	±0.5

SCALE: 1:1 - MIN STANDARD

APPROVED: [Signature]

SIZE
A 4L

REV. - - - - -



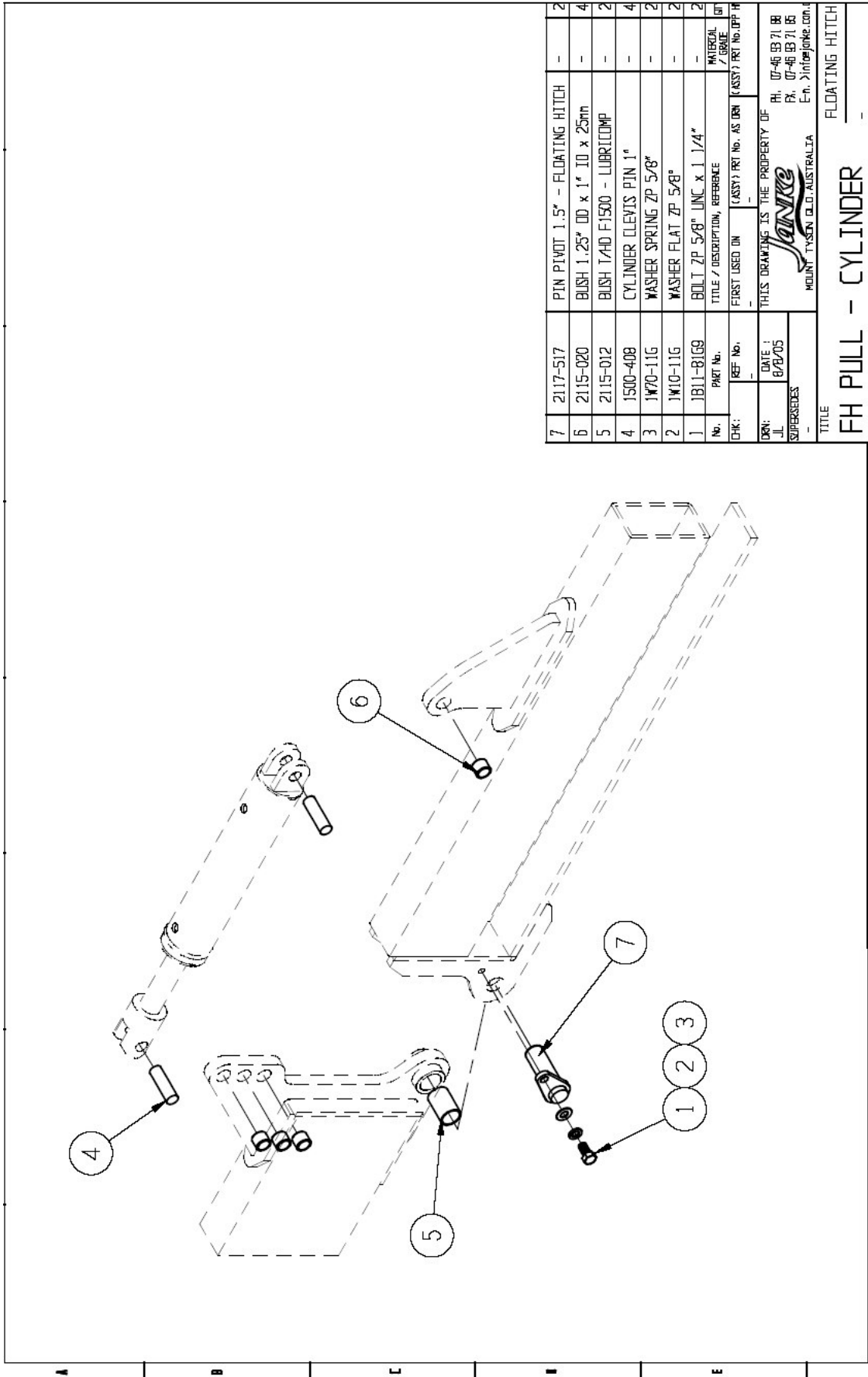
7

Price List for Floating Hitch Pull Assembly Kit

Individual Components:

No.	Part No.	Description	Qty.
1	1B11-81G9	BOLT ZP 5/8" UNC x 1 1/4"	2
2	1B11-81KN	BOLT ZP 1" UNC x 4 1/2" CUT 100mm	4
3	1N31-81K	NUT NYLOCK ZP 1" UNC	4
4	1W10-11G	WASHER FLAT ZP 5/8"	2
5	1W70-11G	WASHER SPRING ZP 5/8"	2
6	2115-012	BUSH T/HD F1500 - LUBRICOMP	2
7	2115-020	BUSH 1 1/4" OD x 1" ID x 25mm	4
8	2117-517	PIN PIVOT 1 1/2" - FLOATING HITCH	2
9	2620-391	TURNBUCKLE FLOATING HITCH	2

⁷ Janke (Australia) reserves the right to alter the pricing of any of its products without notice.



7	2117-517	PIN PIVOT 1.5" - FLOATING HITCH	-	2
6	2115-020	BUSH 1.25" ID x 1" ID x 25mm	-	4
5	2115-012	BUSH 1/4" ID F1500 - LUBRICOMP	-	2
4	1500-408	CYLINDER CLEVIS PIN 1"	-	4
3	1470-116	WASHER SPRING ZP 5/8"	-	2
2	1410-116	WASHER FLAT ZP 5/8"	-	2
1	1811-8169	BOLT ZP 5/8" UNC x 1.1/4"	-	2
No.		PART No.	TITLE / DESCRIPTION, REFERENCE	MATERIAL / GRADE
CHK:		REF No.	(ASSY) RT No. AS DRN	(ASSY) RT No. (APP) RT
DRN:		DATE:	THIS DRAWING IS THE PROPERTY OF	
SUPERSEDES:		18/8/05	MOUNT TYSON QLD AUSTRALIA	
			PH. 07-46 93 71 66 FX. 07-46 93 71 66 E-m. >info@johne.com.au	
TITLE: FH PULL - CYLINDER				
FLOATING HITCH				
PART No. -				
SIZE: A 4L				
APPROVED: 1 - NON STANDARD 7 - REV. -				
UNLESS SPECIFIED MATERIAL - STEEL TO:				
AS3678/260 - (MS) PLATE/BAR/Etc				
AS1163/260/C350 - RHS/SHS				
AS11074 - (NB) NOMINAL BORE PIPE				
AS1442/EN - (4A) (HB) HOLLOW BAR				
TOLERANCES UNLESS SPECIFIED		MACHINING		
DIM	+/- 0.05	DIM	+/- 1°	
ANGULAR	+/- 0.05°	ANGULAR	+/- 1°	
FINISH	B.4uM	HOLE CRS	+/- 0.5	
REV.	ZONE	DESCRIPTION OF CHANGE	BY	DATE
-	-	MAX. -	MAX. -	-
-	-	MIN. -	MIN. -	-



8

Price List for Floating Hitch Pull - Cylinder

Individual Components:

No.	Part No.	Description	Qty.
1	1B11-81G9	BOLT ZP 5/8" UNC x 1 1/4"	2
2	1W10-11G	WASHER FLAT ZP 5/8"	2
3	1W70-11G	WASHER SPRING ZP 5/8"	2
4	1500-408	CYLINDER CLEVIS PIN 1"	4
5	2115-012	BUSH T/HD F1500 - LUBRICOMP	2
6	2115-020	BUSH 1 1/4" OD x 1" ID x 25mm	4
7	2117-517	PIN PIVOT 1 1/2" - FLOATING HITCH	2

⁸ Janke (Australia) reserves the right to alter the pricing of any of its products without notice.

