

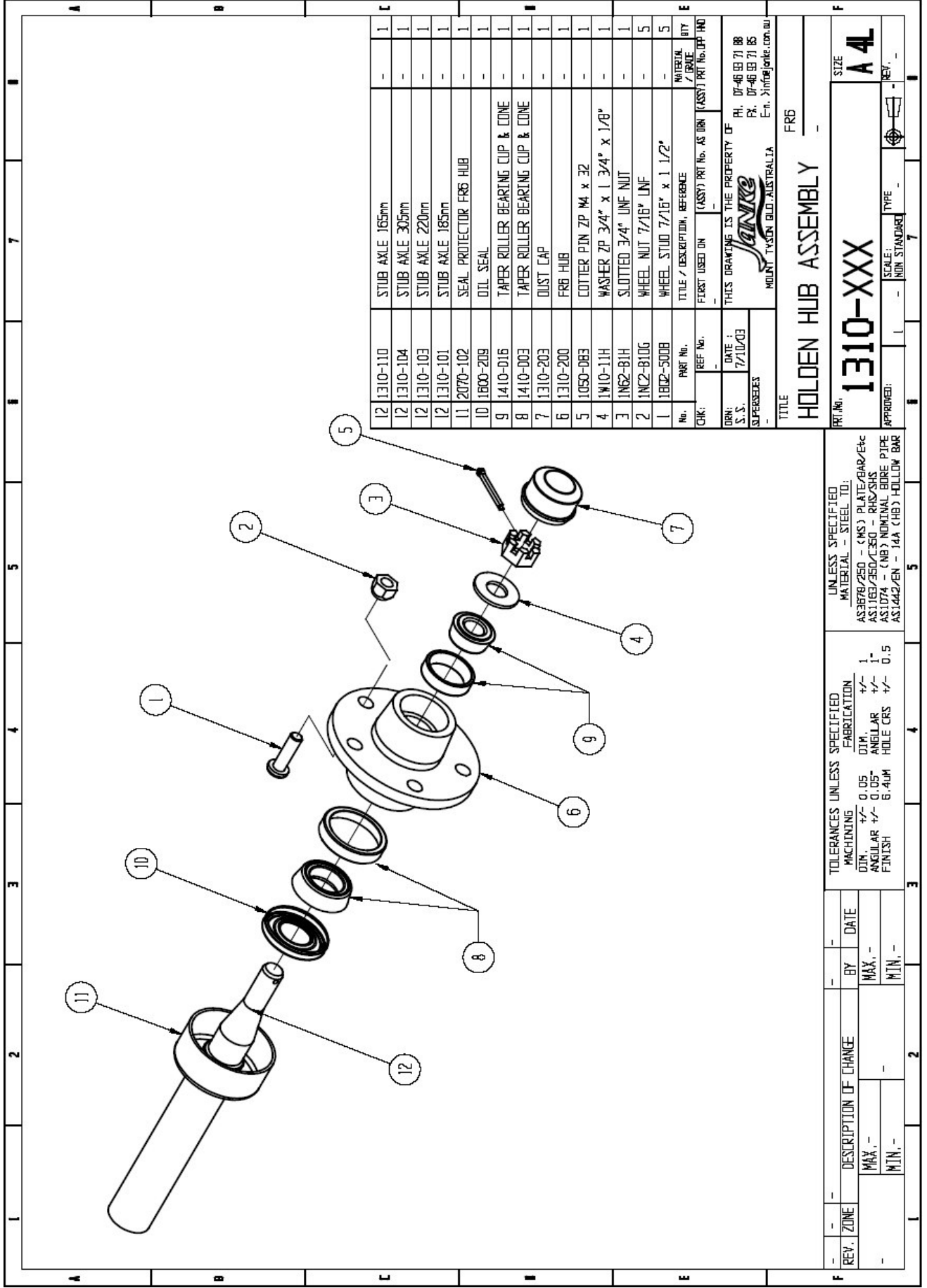


1

Section 1

Hubs

¹ Janke (Australia) reserves the right to alter the pricing of any of its products without notice.



12	1310-110	STUB AXLE 165mm	-	1
12	1310-104	STUB AXLE 305mm	-	1
12	1310-103	STUB AXLE 220mm	-	1
12	1310-101	STUB AXLE 185mm	-	1
11	2070-102	SEAL PROTECTOR FR8 HUB	-	1
10	1800-209	OIL SEAL	-	1
9	1410-016	TAPER ROLLER BEARING CUP & CONE	-	1
8	1410-003	TAPER ROLLER BEARING CUP & CONE	-	1
7	1310-203	DUST CAP	-	1
6	1310-200	FR8 HUB	-	1
5	1050-083	COTTER PIN ZP M4 x 32	-	1
4	1W10-11H	WASHER ZP 3/4" x 1 3/4" x 1/8"	-	1
3	1N62-81H	SLOTTED 3/4" UNEF NUT	-	1
2	1N2-810G	WHEEL NUT 7/16" UNEF	-	1
1	1B02-500B	WHEEL STUD 7/16" x 1 1/2"	-	5

No. PART No. MATERIAL QUANTITY
 TITLE / DESCRIPTION, REFERENCE
 FIRST USED ON (ASSY) PART No. AS DRN (ASSY) PART No. (OFF HAD)

DRN: DATE: 7/10/03
 S.S. SUPERSEES:

THIS DRAWING IS THE PROPERTY OF
 HOLT TYSON BLD AUSTRALIA E-n. >info@holts.com.au
 PH. 07-46 89 71 88
 FAX. 07-46 89 71 85

TITLE: FR8
HOLDEN HUB ASSEMBLY

PART No. **1310-XXX** SIZE **A4**
 APPROVED: SCALE: 1:1 - NON STANDARD TYPE: REV.

UNLESS SPECIFIED MATERIAL - STEEL TO: AS3678/250 - (MS) PLATE/BAR/Etc AS1163/250/C250 - PHOS/US AS11074 (NB) NOMINAL BORE PTDE AS1442/EN - 14A (H8) HOLLOW BAR	TOLERANCES UNLESS SPECIFIED FABRICATION DIM. +/- 0.05 DIM. +/- 0.1 ANGULAR +/- 0.05 ANGULAR +/- 0.5 FINISH 6.4UM HOLE CRS +/- 0.5	BY: DATE: - MAX. MIN. - MIN. MIN. -	DESCRIPTION OF CHANGE MAX. MIN. -	REV. ZONE: - - -
--	--	---	--------------------------------------	------------------------



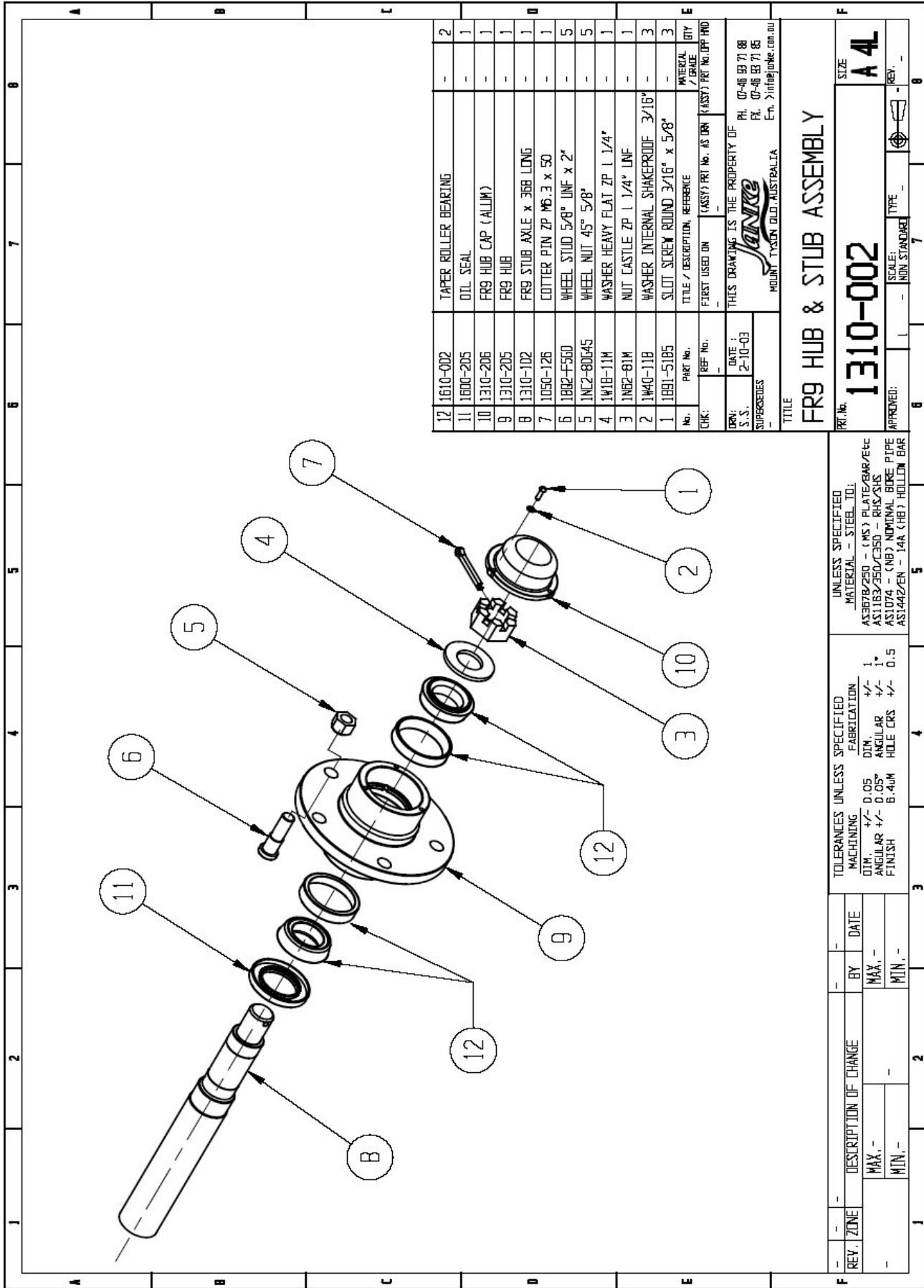
2

Price List for FR6 Holden Hub
Assembly
1310-XXX

Individual Components:

No.	Part No.	Description	Qty.
1	1Q2-50DB	WHEEL STUD 7/16" UNF x 1 1/2"	5
2	1NC2-81DG	WHEEL NUT 7/16" UNF	5
3	1N62-81H	SLOTTED 3/4" UNF NUT	1
4	1W10-11H	WASHER ZP 3/4" x 1 3/4" x 1/8"	1
5	1050-083	COTTER PIN ZP M4 x 32	1
6	1310-200	FR6 HUB	1
7	1310-203	DUST CAP	1
8	1410-003	TAPER ROLLER BEARING CUP & CONE	1
9	1410-016	TAPER ROLLER BEARING CUP & CONE	1
10	1600-209	OIL SEAL	1
11	2070-102	SEAL PROTECTOR FR6 HUB	1
12	1310-101	STUB AXLE 185mm	1
12	1310-103	STUB AXLE 220mm	1
12	1310-104	STUB AXLE 305mm	1
12	1310-110	STUB AXLE 165mm	1

² Janke (Australia) reserves the right to alter the pricing of any of its products without notice.



NO.	REF. NO.	QTY	DESCRIPTION	UNIT
12	1610-002	-	TAPER ROLLER BEARING	2
11	1600-205	-	OIL SEAL	1
10	1310-206	-	FR9 HUB CAP (ALUM)	1
9	1310-205	-	FR9 HUB	1
8	1310-102	-	FR9 STUB AXLE x 368 LONG	1
7	1050-126	-	COTTER PIN ZP M6.3 x 50	1
6	1882-F560	-	WHEEL STUD 5/8" UNF x 2"	5
5	1NC2-80045	-	WHEEL NUT 45" 5/8"	5
4	1W18-11M	-	WASHER HEAVY FLAT ZP 1 1/4"	1
3	1NB2-81M	-	NUT CASTLE ZP 1 1/4" UNF	1
2	1W40-11B	-	WASHER INTERNAL SHAKERPROOF 3/16"	3
1	1891-5195	-	SLOT SCREW ROUND 3/16" x 5/8"	3

TITLE: FR9 HUB & STUB ASSEMBLY
 PART No: 1310-002
 SIZE: A 4L
 SCALE: 1:1
 NON-STANDARD TYPE:
 APPROVED:
 REVISION:

UNLESS SPECIFIED
 MATERIAL - STEEL, TO:
 AS3678/250 - (MS) PLATE/BAR/ESC
 AS1163/250/CS50 - RHS/SHS
 AS1074 - (NB) NUT/BOLT PIPE
 AS1442/EN - 14A (HB) HOLLOW BAR

TOLERANCES UNLESS SPECIFIED
 FABRICATION
 DIM: D 0.05, D 0.05, B 0.40M
 ANGULAR +/- 1°, HOLE CRS +/- 0.5
 FINISH

REV. ZONE	DESCRIPTION OF CHANGE	BY	DATE
MAX.			
MIN.			



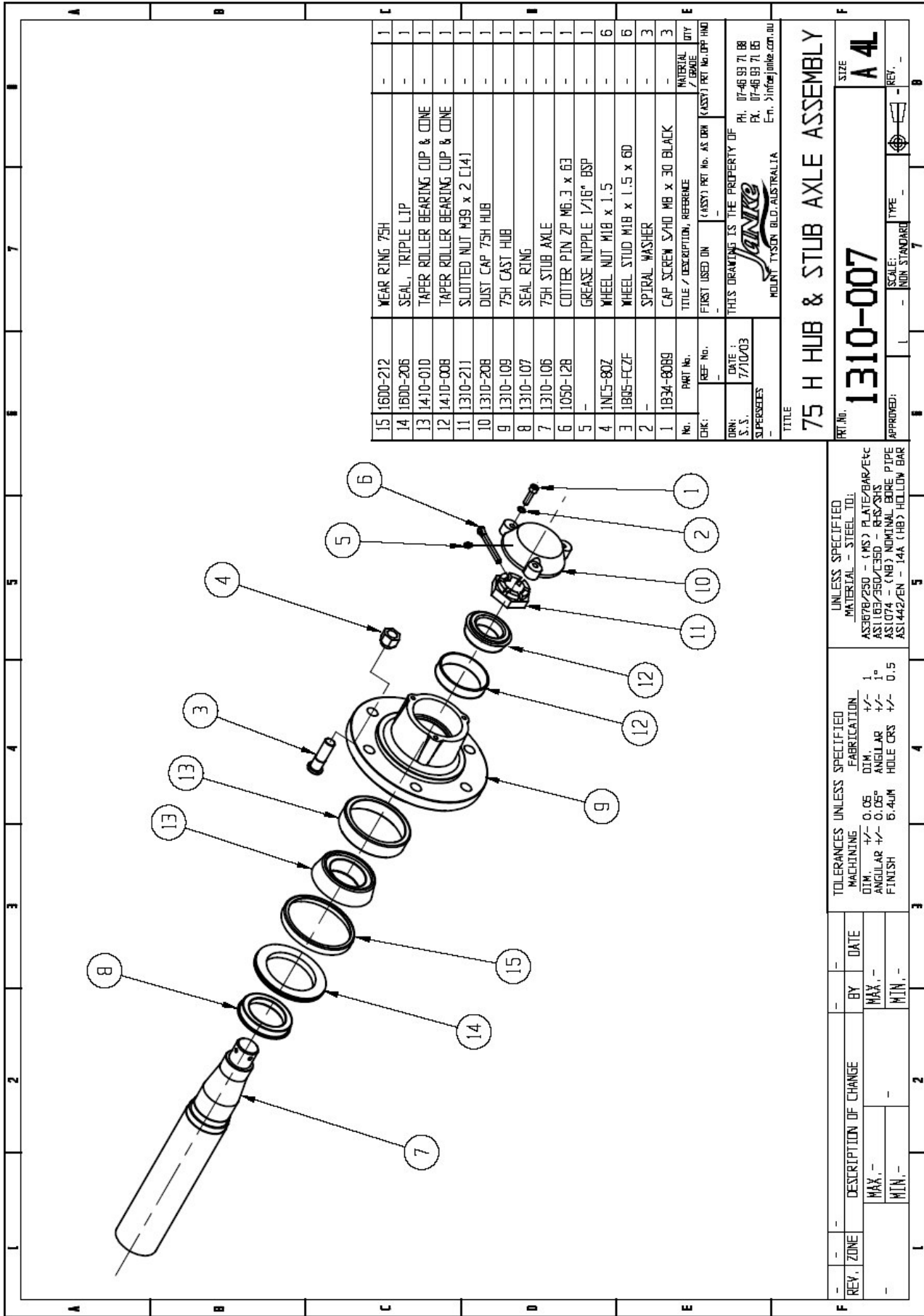
3

Price List for Hub & Stub Assembly FR9 **1310-002**

Individual Components:

No.	Part No.	Description	Qty.
1	1B91-5185	SLOT SCREW ROUND 3/16 X 5/8"	3
2	1W40-118	WASHER INTERNAL SHAKEPROOF ZP 3/16"	3
3	1N62-81M	NUT CASTLE ZP 1 1/4"UNF	1
4	1W1B-11M	WASHER HEAVY FLAT ZP 1 1/4"	1
5	1NC2-80G45	WHEEL NUT 45 DEG 5/8" - 15/16"AF	5
6	1BQ2-F5GD	STUD WHEEL 5/8 UNF X 2"	5
7	1050-126	COTTER PIN ZP M6.3 X 50	1
8	1310-102	AXLE STUB FR9	1
9	1310-205	HUB FR9	1
10	1310-206	CAP (ALUM) C648 FR9 HUB	1
11	1600-205	SEAL OIL TC 1.875 X 3.0X .375 SUIT FR-9 HUB ASSY	1
12	1610-002	BEARING TAPER ROLLER LM501349/10	2

³ Janke (Australia) reserves the right to alter the pricing of any of its products without notice.



No.	Part No.	Title / Description, Reference	Material / Qty
15	1600-212	WEAR RING 75H	-
14	1600-206	SEAL, TRIPLE LIP	-
13	1410-010	TAPER ROLLER BEARING CUP & CONE	-
12	1410-008	TAPER ROLLER BEARING CUP & CONE	-
11	1310-211	SLOTTED NUT M39 x 2 [14]	-
10	1310-208	DUST CAP 75H HUB	-
9	1310-109	75H CAST HUB	-
8	1310-107	SEAL RING	-
7	1310-106	75H STUB AXLE	-
6	1050-128	COTTER PIN ZP M6.3 x 63	-
5	-	GREASE NIPPLE 1/16" BSP	-
4	11N5-80Z	WHEEL NUT M18 x 1.5	-
3	18N5-FCZF	WHEEL STUD M18 x 1.5 x 60	-
2	-	SPIRAL WASHER	-
1	1834-8089	CAP SCREW S/HI M8 x 30 BLACK	-

TITLE: 75 H HUB & STUB AXLE ASSEMBLY
 PART No. 1310-007
 SIZE: A 4L
 APPROVED: [Signature] TYPE: [Signature]
 SCALE: 1:1 HUB STANDARD
 DRN: [Signature] DATE: 17/10/03
 SUPERSEDES: -
 ENK: REF No. (ASSY) REF No. AS DW (ASSY) REF No. (OFF) HMT
 THIS DRAWING IS THE PROPERTY OF JANKE
 POLY-TYSEY BLD, AUSTRALIA
 PH. 07-46 99 71 88
 FX. 07-46 99 71 66
 E-m. >info@janke.com.au

REV.	ZONE	DESCRIPTION OF CHANGE	BY	DATE
-	-	MAX.	MAX.	-
-	-	MIN.	MIN.	-

TOLERANCES UNLESS SPECIFIED	FABRICATION
MACHINING	+
DIM.	±0.05
ANGULAR	±1°
FINISH	6.4UM
HOLE CRS	±0.5

UNLESS SPECIFIED	MATERIAL - STEEL TO:
AS 3678/250	(MS) PLATE/BAR/Etc
AS 1163	SEWER/PIPE
AS 1074	(NB) NOMINAL BORE PIPE
AS 1442/EN	- 14A (HB) HOLLOW BAR



4

Price List for 75H Hub **1310-007**

Individual Components:

No.	Part No.	Description	Qty.
1	1B34-80B9	CAP SCREW S/HD M8 x 30 BLACK	3
2	-	SPIRAL WASHER	3
3	1BQ5-FCZF	WHEEL STUD M18 x 1.5 x 60	6
4	1NC5-80Z	WHEEL NUT M18 x 1.5	6
5	-	GREASE NIPPLE 1 1/16" BSP	1
6	1050-128	COTTER PIN ZP M6.3 x 63	1
7	1310-106	75H STUB AXLE	1
8	1310-107	SEAL RING	1
9	1310-109	75H CAST HUB	1
10	1310-208	DUST CAP 75H HUB	1
11	1310-211	SLOTTED NUT M39 x 2 C141	1
12	1410-008	TAPER ROLLER BEARING CUP & CONE	1
13	1410-010	TAPER ROLLER BEARING CUP & CONE	1
14	1600-206	SEAL, TRIPLE LIP	1
15	1600-212	WEAR RING 75H	1

⁴ Janke (Australia) reserves the right to alter the pricing of any of its products without notice.

